

EQUIPMENT JOURNAL

NATIONAL HEAVY EQUIPMENT NEWS. DELIVERED. SINCE 1966

DECEMBER 23, 2022

ISSUE
17

PUBLICATIONS MAIL AGREEMENT: 40063867

FOCUS: LANDSCAPING & TECHNOLOGY

McDowell Since 1968
McDowell B Equipment Ltd.

2006 VOLVO A25D, Volvo D9B ABE, Tier IV 305 hp, 26.5 ton payload, stk# B145-189

\$65,000



See our ad on page A5

705-566-8190 **www.bmcdowell.com**
416-770-7706 **sales@bmcdowell.com**

NORTH TORONTO AUCTION



ONLINE AUCTIONS

Next Auction: January 28th @ 9am
Industrial Equipment, Repos, Government & Rec. Vehicles

"Post It-Sell It-Buy It-Get It" on:  **AUTO GAVEL MARKETPLACE**

northtorontoauction.com

Sales, Rentals & Rental Purchase  **Quality, Reconditioned Equipment Since 1976**

CAT 352FL (2018)

- 4 Units available
- 3,900 to 4,290 hrs
- 22'8" Reach Boom
- 11' Stick
- Hydraulic Pin Grabber
- Auxiliary Hydraulics
- Variable gauge U/C
- 30" Track Shoes
- CAT Dealer Inspected
- Arriving Soon
- **CALL for Price & Details**



SEE OUR AD ON PAGE A6 **Contact John or Mark at:**
1-800-265-5747
www.marcelequipment.com

CG EQUIPMENT RENTALS **GET IN TOUCH**
1-844-933-4424
sales@cgequipment.com

COMING SOON!



FECON FX150-2
DEDICATED FORESTRY MULCHER
• Cummins 3.8L Tier 4 final, stage V engine
• 155 hp • Weight: 20,900 lbs

FECON 

ALL-STAR AUCTIONS INC. **ONLINE HEAVY EQUIPMENT & TRANSPORTATION AUCTIONS**

We want to wish you all a very
Merry Christmas
and a happy, safe & prosperous
New Year!

Thank you for helping make our year a success!

1-888-376-3155 • AllStarAuctions.ca
44 Line 9 South, Oro-Medonte, ON L0L 1T0

AXXIS **AMI ATTACHMENTS**



1.800.556.9452
amiattachments.com

Landscape Ontario Congress - BOOTH 1534
Toronto, ON - January 10-12, 2023

MAGNUM ATTACHMENTS **MAXIMUM PRODUCTIVITY**
magnumattachments.com

YOU'VE GOT ALL THE ANGELS COVERED WITH MAGNUM TILTROTATORS



1-877-640-2862

CRD CREIGHTON **1-855-625-0941**
sales@creightonrock.com

SNOW MOVERS
IN STOCK Blowers & Plows



PALADIN
Snow Blower 48", 72" and 84" Snow Plow 72", 84" and 96"

CRDCREIGHTON.COM 

Happy Holidays



from TOP LIFT ENTERPRISES

TOP LIFT ENTERPRISES
Serving Canada
TOPLIFT.COM
SALES+PARTS+RENTALS+SERVICE
5 Branches to Serve You!
• Stoney Creek
• Bolton
• Surrey
• Sherbooke
• Montreal

Link-Belt EXCAVATORS
TOPLIFT FERRARI
LIUGONG NORTH AMERICA

AFTERMARKET PARTS EXPERTS!

UNDERCARRIAGE EXPERTS!



ALL MAKES ALL MODELS

AUTHORIZED DISTRIBUTOR 

- Engines
- Transmissions
- Pumps
- Filters
- Cabs
- Rubber Tracks
- Pins & Bushings
- Electrical Parts
- Bearings
- Seats & More...

1-800-263-4597
www.essltd.com
EQUIPMENT SALES & SERVICE LIMITED

BEST MANAGED COMPANIES
Platinum member

DELTA POWER **YANMAR**



4 Year 4000hr Warranty
9% BETTER Fuel Economy with ECO Mode
5 YEARS FREE Smart Assist Telematics
0 TAIL SWING Performance on 6 Models

1-833-981-4278 **sales@deltapower.ca**
https://bit.ly/deltapowerconstruction

lubecore **NEXT GENERATION AUTOMATED LUBRICATION**



- Save labour
- Save parts
- Protect your investment
- Protect your employees
- Protect the environment

905-864-3110
LUBECORE.COM
WE SERVICE ALL MAKES

NEED LESS SNOW?
1-800-315-COOP



COOPER EQUIPMENT RENTALS **50 YEARS**

RETURN UNDELIVERABLE ITEMS TO:
EQUIPMENT JOURNAL, PO BOX 160 PORT MCNICOLL, ON L0K 1R0

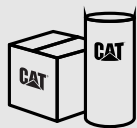
YOUR BUSINESS MOVES FAST. SO DO WE.

GET QUALITY CAT® PARTS 24/7 AT **PARTS.CAT.COM**



GETTING THE PARTS YOU NEED HAS NEVER BEEN EASIER.

Parts.cat.com is easy to use, reliable, and available around the clock, seven days a week.



Browse our inventory of
over 1.4 million parts



Search by part number, equipment
model or serial number



Find reliable new, used and
remanufactured parts



Ship to your door or pick up
at your local branch

Shop today at parts.cat.com

Need help? Get in touch with us!
pccsupport@toromont.com | 1 866 440-4043





Cat launches
352-model excavator

A8



Komatsu adds XT-5
tracked harvesters

A15



Doosan to introduce
new brand, products

A17

EQUIPMENT JOURNAL

NATIONAL HEAVY EQUIPMENT NEWS. DELIVERED. SINCE 1966

ISSUE 17

December 23, 2022

CONNECT WITH US



THE ALL-NEW JOHN DEERE 200 G-TIER

A7

John Deere launches the new 200 G-Tier excavator and debuts its next phase of performance tiering.



FEATURED **EQUIPMENT**

TECHNOLOGY

B3



FEATURED **EQUIPMENT**

LANDSCAPING

B9

ADVERTISER INDEX DECEMBER 23/2022

Amaco Construction Equipment Inc.....	A8
AMI Attachments	A1
Bobcat Dealers	A13
Brandt Used Equipment	A9
Bull Powertrain	A10
Central Diesel Service.....	A7
CG Equipment Rentals	A1
Con-Expo.....	B12
Convertermen	B4
Cooper Equipment Rentals.....	A1
Creighton Rock Drill Limited.....	A1,A7
D/S Manufacturing.....	B13
Delta Power Equipment.....	A1
Doosan	A14
Equipment Sales & Service Limited.....	A1
Flo Components.....	A18
Gear Equipment.....	A15
Harding Equipment.....	A18
High Reach Inc.....	A8
Hub Equipment.....	B16
Hydrolexc	B10
Hyundai Dealers	B2
Jade Equipment.....	A12
JBL Truck & Equipment Appraisal.....	B7
JCB Dealers.....	A20
JT Equipment	A4
LBX Link-Belt Excavators.....	B8
LSW Wear Parts Ltd.	A17
M-K Power Products Corp.....	B7
Magnum Attachments.....	A1
Marcel Equipment Limited	A1,A6
McDowell B Equipment Ltd.	A1,A5
Pine Ridge Lisco Edwards.....	B11
Rototilt.....	A11
Shaw Bros. Limited.....	A10
SMS Equipment.....	B15
Strongco Corporation	B5
Sutton Stromart	B4
Tarten Equipment Limited	A15,B10
Top Lift Enterprises	A1
Toromont CAT	A2,B1
Tramac	A16
Tri-City Equipment	B6
Vermeer Canada	A17
Wirtgen.....	A19

AUCTIONS

AllStar Auctions	A1
LubeCore	A1
North Toronto Auction.....	A1

LETTER FROM THE EDITOR

Excess soil, excess confusion

In 2019, the Ontario Ministry of the Environment, Conservation and Parks finalized a new Excess Soil Regulation under the Environmental Protection Act (O. Reg. 406/19: On-Site and Excess Soil Management).

The new regulation, which aims to improve soil management practices, was set to be implemented through a phased approach beginning January 1st, 2022.

At the time, the new regulations were generally met with positive reactions from environmental stewards and the soil management industry alike.

However, in April of this year, the Ministry surprised the construction and soil management industries by placing a “pause” on Phase Two of the implementation process, including a temporary suspension of the provisions that had already

come into effect at the beginning of the year.

This announcement was met with confusion from industry stakeholders, who questioned the rationale behind pausing efforts that were already underway and feared that this freeze may signal a course reversal by the Ontario government.

According to the Ministry, the pause was intended to “provide time for municipalities, developers and other stakeholders to gain a greater understanding of the Excess Soil Regulation and for the Ministry to consider the need for improvements to the regulation.”

To this end, the Ministry hosted online engagement sessions with representatives from industry, environmental groups, and various levels of government in the Spring.

However, industry stakeholders voiced their concerns

as the months went on and the Ministry grew silent.

The Ministry broke this silence on November 3rd, 2022 when it announced proposed amendments to the Excess Soil Regulation. The Ministry stated that these amendments are intended to make the Excess Soil Regulation more practical and focused on higher-risk movements of soil, reducing requirements applicable to low-risk projects and providing more flexibility when storing excess soil.


Pending results of the public comment period, which ran until December 3rd, the requirements that were paused in April 2022 will come back into effect on January 1, 2023 along with these minor amendments.

Given the significant impact that these requirements are expected to have on the timing and cost of construction projects, experts are



Max Carrington // Editor
editor@equipmentjournal.com

recommending that the industry prepares to work in accordance with the provisions, and not to rely on the possibility of further delays.

Despite the back-and-forth over the last year, these measures present an opportunity to improve soil management in the province, both from an environmental and industry bottom-line perspective. 

WISHING YOU A MERRY CHRISTMAS AND A HAPPY NEW YEAR



CONTACT US

Editor
Max Carrington
editor@equipmentjournal.com

Sales Manager
Tara Rosen
tara@equipmentjournal.com

Creative Director/Creative Services
Ryan Chuhaniuk
ryan@equipmentjournal.com

Publisher
Mark Baker
mark@equipmentjournal.com

National Account Manager
Mona Fahmi
mona@equipmentjournal.com

Circulation Manager
Lisa Bath
lisa@equipmentjournal.com

**PACE PUBLISHING LIMITED
EQUIPMENT JOURNAL**
5160 Explorer Drive, #6
Mississauga, ON, L4W 4T7
Canada

LOCAL: (905) 629-7500
TOLL-FREE: CDN/USA
1-800-667-8541

EMAIL US:
advertise@equipmentjournal.com
WEBSITE:
www.equipmentjournal.com

OFFICIAL SOCIAL MEDIA ACCOUNTS

 @EquipJournal  @EquipmentJournal  @equipmentjournal  Equipment Journal

EQUIPMENT JOURNAL IS AN AUDITED PUBLICATION



Published every third Monday at 6-5160 Explorer Dr., Mississauga, (Toronto). Subscription \$44. per annum or \$72. for 2 years including applicable tax., Payable in advance. Single copy \$3.95. Authorized as Publications Mail Agreement No. 40063867, by the Post Office Dept. Ottawa and for payment in cash. Advertising is accepted on the condition that in the event of typographical error, that portion of the advertising space occupied by the error together with reasonable allowance for signature will not be charged for, but the balance of the advertisement will be paid for at the applicable rate. In the event of a typographical error advertising goods or services may not be sold. Advertising is merely an offer to sell and may be withdrawn at any time. We reserve the right to reject or refuse any or all advertising. **Equipment Journal permission is required to reproduce original ad layout, artwork and photos.**
H.S.T. #104037957 RT

Custom rail chassis and electric motor create perfect combo for Valet & Ott

Schlueter for construction machinery delivered a new SENNEBOGEN electric material handling machine to Valet & Ott in Freiberg, Germany for handling bulk goods by the ton in the port. With its built-in electric drive, this 835 E is not only low on operating costs, but also features a customized rail chassis, which was specially adapted to the rails already available in the port at the customer's request.

Valet & Ott Group

In 1926, company founders August Valet and August Ott laid the foundation for the medium-sized family company, Valet & Ott, with the first gravel plant in Freiberg am Neckar. The Valet & Ott Group operates gravel works in Baden-Württemberg, Mecklenburg-West Pomerania and Saxony for the production of high-quality concrete aggregate and road building materials.

The focus of production is on the manufacturing of high-quality gravel, grit and sand products.

In addition to the products, the company offers has established itself in the areas of logistics, building material monitoring, building inspections, structural and civil engineering and as a collection point for unpolluted excavation material.

Overall, Valet & Ott employs almost 300 people at 38 locations, with its head office being in Freiberg am Neckar, where around 150,000 tons of material are delivered by ship every year.

Friendly and efficient

The 835 E from SENNEBOGEN is responsible for loading and unloading ships and material handling, including truck loading, at Valet & Ott in Freiberg.

The built-in, 200 kW electric motor allows the material handler to work with high performance in combination with low consumption, which ensures fast work cycles when loading and unloading—an economical and environmentally friendly solution.

Its robust design, due to particularly low-wear and durable machine components, makes the 835 E ideal for continuous operation and protects the machine from longer downtimes.

In addition, SENNEBOGEN claims that the electric excavator is particularly easy to maintain.

With the E series installation at the rear of the superstructure, easy and safe access to the electrical components is guaranteed. A non-slip tread also protects the machine operator from accidents during maintenance work.

Specially equipped rail chassis

The rail chassis of the SENNEBOGEN 835 E electric excavator at Valet & Ott is a special feature that enables the machine to move on the existing contact rails in the port.

A hydraulically driven rail undercarriage from the 835 E series was selected and adapted to the track width of the rails.

In order to be able to accommodate the existing electrical box for controlling the sliding contacts, the undercarriage of the electric excavator was equipped with lifts and a bracket. The mechanical connection between the rails and the excavator was carried out by the customer service specialists from Schlueter for construction machinery.

“One of the main reasons for purchasing the electric excavator was the adapted rail chassis,” said Marco Moradian, manager at Valet & Ott. “We had massive problems before and other manufacturers were unable to offer us a satisfactory solution.”

Reliability and performance convinces

The SENNEBOGEN 835 E electric excavator has now been in service at the port of Valet & Ott for almost three years.

“When we made the purchase, we looked at several products and SENNEBOGEN had the machine that

convinced us the most,” explained Moradian. “In addition to adapting to our rail portal, we also had a few requirements in terms of radius and lifting power, and the SENNEBOGEN 835 E electric excavator was the machine that fitted best.”

The machine from Schlueter für Baumaschinen was delivered by area sales manager Michael Köhnlein. The medium-sized family company sees itself not only as a dealer, but also as a service provider who prides itself on long-term customer satisfaction.



Since 1968

McDowell

McDowell B Equipment Ltd.

416.770.7706 or 705.566.8190

bmcdowell.com

sales@bmcdowell.com

RENT US

2020 LINK-BELT 350 X3, 266 hp, 10'8" stick, **2019 LINK-BELT 210 X2**, 157 hp, 18'2" boom & **2018 LINK-BELT 240 X2**, 177 hp, 19'2" boom, stk#'s B160-221, R160-1000/1006

RENT ME

2017 CAT D3K2, CAT C4.4 Acert diesel engine, 92 hp, Tier IV final, heat & A/C, hydrostat trans., stk# R130-1001

RENT ME

2016 CAT D4K2, Cat C4.4 Acert diesel eng. 92 hp Tier 4F, heat & A/C, 18" pads, VPAT blade, cold weather pkg, stk# B130-93

RENT ME

2013 CAT 972H, CAT C13 Acert diesel engine, 311 hp, Tier 3, heat & A/C, ride control, backup camera, snow pusher blade avail., stk# B110-176

RENT ME

2014 CAT 416F, extendahoe, 4x4, Cat C4.4 Acert diesel eng. 88 hp, ride control, rear outriggers, stk# B110-187

RENT ME

2016 VOLVO SD45, 54" smooth drum, sold new in 2019, Kubota T3 engine, blade, padfoot kit avail., stk# B200-373

BUY/RENT

2013 KOMATSU D85EX, 264 hp diesel eng. Tier III, heat & A/C, operating weight: 66,250 lbs., stk# B130-88

RENT ME

2019 BOBCAT S550 COMPACT SKID-STEER, 2 speed, heat, aux. hyd., hydraulic skid-steer coupler, complete with 68" bucket, stk# B100-887

BUY/RENT

2012 N&N 12' TRAILERS, Usuable 72"W & 145"L, 7920 lbs load capacity, tool box, smart battery charger, tarp & roller, stk# B210-482/3

BUY/RENT

1999 BOMAG BW142PD2, 56" pad-12.4 R20 Continental, stk# B200-107

AMMANN
Compaction

Bobcat
Compact Equipment

Eager Beaver
Trailers/Floats

HAMMEROG
Hammers

Kawasaki
Wheel Loaders

Link-Belt
EXCAVATORS

MOTOMORA
Carriers

Sullivan Palatek
Air Compressors

YouTube

SERVICE

YOU CAN COUNT ON FOR 54 YEARS!

GTA & SUDBURY

All of us from the McDowell B Equipment want to wish you and your family a very Merry Christmas & Happy, Healthy New Year!

We are honoured to provide you with excellent Sales, Rentals, Parts & high end Service for over 53 Years. Thank you!



**SALES, RENTALS
&
RENTAL PURCHASE**

LONDON, ONTARIO, CANADA
Contact John or Mark at:
1-800-265-5747 or 519-686-1123
Email: sales@marcelequipment.com



REBUILT CAT 826H COMPACTORS - 0 Hours
Components Rebuilt, Complete Machine Recondition, **3 year CAT Component Warranty.**
40 Compactors to choose from.

**UNITS SOLD WITH WARRANTY
WE ALSO RENT EQUIPMENT
CONTACT MARK or JOHN
1-800-265-5747 or 519-686-1123**



**RECONDITIONED / REBUILT CAT 816B/F/K
LANDFILL COMPACTORS | Choice of 18 – Yes 18**
Work Ready with **Warranty.**



CAT 980M (2019) - 6,765 Hours
Aggregate Handler Spec, GP Bucket, Payload System,
Inspected, Serviced, All Repairs Completed.



CAT 980M (2016) – 7,885 Hours
Aggregate Arrangement, 7.75 CYD Bucket,
Auto Grease, Rear Camera, All servicing / Repairs
Completed.



CAT 980M (2014) – 8,910 Hours
Aggregate Handler, 7.75 CYD Bucket, L3 Tires,
Auto Grease, Rear Camera, All servicing &
/ Repairs Completed.



CAT 988H (2012) - 18,850 HRS
Choice of Tires, Choice of Bucket, Maintained by
Cat Dealer since new, Auto Grease.



CAT 988K (2014) - 14,955 Hours
Spade Bucket with Teeth, Rebuilt Engine, Inspected,
Serviced, All Repairs Completed.



KOMATSU WA500-8 (2017)
8.25 CYD Bucket, 875/65R29 Michelin Tires
Komatsu Scale, All Servicing/Repairs Completed.



KOMATSU WA500-8 (2016) - 8,653 Hours
8 CYD Bucket, 29.5R25 Tires, Bucket Scale,
All Servicing / Repairs Completed



CAT D6T LGP (2019) - 7,645 HRS
VPAT Blade, 31" Track Shoes, Drawbar,
CAT Dealer Maintained since New.
Ripper / Winch Available



(7) CAT D8T LGP (2019/2020)
2,230 to 14,345 Hours
SU Blades, 38" Pads, Draw-bar.



(4) CAT D8T (2011-13) - 4,381-8,090 HRS
Very Clean, Choice of SU or Angle Blade, Drawbar.
Ripper/Winch Available.



CAT 725C2 (2018) - 6,990 HRS
23.5R25 Tires, Rear Camera, All needed
Servicing & Repairs to be Completed.



VOLVO A25G (2017) - 6,850 HRS
23.5R25 Tires, Rear-View Camera, Inspected, All
Needed Servicing and Repairs Completed.



CAT 730C (2015) – 9,988 Hours
23.5R25 Tires, Rear Camera, All Needed Servicing
and Repairs Completed. Tailgate Available.



CAT 730C2 (2017) – 6,865 Hours
23.5R25 Tires, Rear Camera, All needed
Servicing & Repairs are completed.



CAT 745C (2015) – 7,340 HRS
Inspected, Serviced, All Needed Repairs Completed,
Rear Camera, Tailgate Available.



CAT 745C (2015) – 5895 Hours
NEW 29.5R25 Tires, Dealer Maintained,
All Needed Servicing / Repairs Will Be Completed.

VIEW our Complete Inventory at: www.marcelequipment.com



John Deere launches 200 G-Tier excavator, debuts new phase of performance tiering

Aimed to deliver a range of products at different levels of capability and user experience, John Deere has debuted its latest P-Tier and G-Tier excavator models to its portfolio of mid-size machines.

As part of its Performance Tiering Strategy, the 135, 210, 245, 250, 300 and 345 models have been added to John Deere's lineup of P-Tier excavators.

In addition, the company is introducing a brand-new model to its family of G-Tier excavators: the 200 G-Tier.

"Every job site is different, and our customers want excavator options that can be personalized by performance, price and operator experience," said Justin Steger, solutions marketing manager, John Deere Construction & Forestry. "Our newly expanded lineup of P- and G-Tier excavators, including the brand-new 200 G-Tier, provides machine solutions built for various applications and jobs to enhance profitability and efficiency."

According to John Deere, the P-Tier excavators can be counted on to produce at high levels, day in and day out.

These models boast advanced features and deliver enhanced performance, efficiency and comfort.

Offering improved front-joint durability, the P-Tier mid-size models, including the 135, 210, 245, 250, 300 and 345, promote better performance and operator stability.

With grease points at the arm-tip for easy greasing, extended uptime and better torque retention at the clamp—which reduces the likelihood of the front hydraulic pipes moving—the new P-Tier models were designed to provide optimal performance and easier serviceability.

In addition, the redesigned boom-foot bushings offer enhanced durability for an extended machine life span.

The brand new 200 G-Tier

The latest addition to the John Deere lineup of mid-size excavators is the brand-new 200 G-Tier.

Helping to enhance efficiency and reliability without sacrificing power or torque, the PowerTech 4.5-liter engine on the 200 G-Tier delivers optimal performance for operators of all skill levels.

In addition, the easy-

to-maintain, high-uptime exhaust filters help decrease downtime for service while the in-monitor adjustable flow and pressure auxiliary hydraulics can be easily controlled using the auxiliary function lever.

The Powerwise Plus hydraulic-management system in the 200 G-Tier combines extra ability with smooth control and pinpoint finesse.

Through intuitive technology, the system delivers on-demand power.

Also, offering precise pump flow, the pilot controls are metered, helping to provide reliable, fuel-efficient machine performance. With the push of a button on the joystick, operators can boost power and toggle on automatic boom-up and lifting functions.

In addition, the optional hydraulic single pedal propel system moves the machine when and where you need it to without having to articulate both hand levers and both foot pedals, making for easier operation.

Two factory-installed high-pressure, high-flow

auxiliary packages deliver additional hydraulic capability to power attachments.

In terms of operator comfort, the ergonomically correct, short-throw pilot joysticks on the 200 G-Tier provide smooth, precise fingertip control with less movement or effort.

Furthermore, the control pattern-change valve

comes standard on the 200 G-Tier, helping to provide consistency on the job.

Also standard on the 200 G-Tier is the pattern-control switch, which is conveniently accessible at ground level.

G-Tier & P-Tier attachments

The lineup of John Deere G- and P-Tier excavators can be equipped with a full line

of buckets, which are offered to meet the needs of a wide variety of applications.

The new hydraulic coupler-ready option includes factory-installed hydraulic plumbing to the end of the arm, additional coupler controls integrated into a switch in the cab and a quick and efficient coupler installation capability. ■

CENTRAL DIESEL SERVICE
 Solid Service Since 1983

Your Authorized **DEUTZ** Dealer

***Wishing you all a very Merry Christmas,
and a happy, healthy & successful New Year!***

6604 Davand Dr., Mississauga, Ontario L5T 2M3
905-564-9444 Fax: 905-564-9313 deutz@on.aibn.com

Mazio to launch tiltrotator at CONEXPO-CON/AGG 2023

Durring CONEXPO-CON/AGG 2023 in Las Vegas, attendees will have the chance to learn about how Mazio's newest innovations.

New for 2023, the company will be launching its tiltrotator for excavators.

This product is a result of tiltrotators having seen great interest in Europe and now growing in popularity within North America.

Mazio's new tiltrotator works with excavator tools such as grapples, buckets or shears to provide more versatility and precision.

According to the company, they not only rotate 360°, but they also tilt side-to-side by up to 55°. This ability reduces the need for the operator to move the excavator while

performing tasks—increasing productivity and efficiency.

Also, the Mazio tiltrotator features a hydraulic quick coupler that allows the operator to remain in the cab while changing tools.

Furthermore, it is a maintenance-free operation, with no grease points and no cylinders and it allows access to narrow spaces and on urban projects with large or small equipment.

In addition to the tiltrotator, at CONEXPO-CON/AGG 2023 Mazio will feature its complete line of demolition tools, including hydraulic breakers and wear tips for grinders, breakers, shears, crushers, pulverizers and processors. ■

Sales • Rentals • Service

LANDSCAPING

Pengo Planetary Drive

Sweepster Angle Broom

PALADIN

IN STOCK, and more attachments available to choose from

Sweepster Pickup Broom

FFC Harley Rake

ATTACHMENTS

ON Mississauga • Bracebridge • Sudbury • Timmins • North Bay • Ottawa QC Boisbriand • Lévis • Val d'Or NB Moncton NS Dartmouth
Call: 1-855-625-0941 • CRDCREIGHTON.com



New Cat 352 excavator offers more power for bigger jobs

The new Cat 352 Hydraulic Excavator combines more power and a heavier counterweight to work with larger tools. The result is greater production for more profit potential.

"Built for big jobs, the 352 delivers unmatched performance in its size class,"

said Brian Abbott, Caterpillar global product manager for large hydraulic excavators. "It can be equipped with high-capacity buckets to dig and load tons of material in fewer passes or large hammers to work in demanding quarry applications."

The 352 Excavator offers

a choice of fixed or variable gauge undercarriage. The variable gauge undercarriage retracts to a width of 2390 mm (7 ft, 10 in), making it easy to transport. When expanded, it is 150 mm (6 in) wider than the fixed gauge undercarriage for greater stability.

Different cab trim level options are available.

The Deluxe cab option comes with a heated air-suspension seat. The Premium cab option comes with a heated and ventilated air-suspension seat.

In terms of controls, both have a tilt-up left-hand console for easier access in and out of the machine. Also, optional Cat Stick Steer makes for easy excavator maneuvering through one-hand operation and includes cruise control for even easier traveling.

The 352 features keyless pushbutton start with an available Bluetooth key fob. Engine ignition can also be accomplished through an Operator ID passcode.

Furthermore, the unique Operator ID can quickly save and restore joystick button, response, and pattern preferences for individual operators.

The high-resolution touchscreen monitor offers quick navigation through machine

controls and provides easy access to the digital operator's manual.

Smart technology

Standard Cat Grade technology boosts excavator productivity up to 45 percent.

Cat 2D Grade indicates depth and slope on the in-cab monitor with auditory alerts, while standard Cat Grade Assist allows the excavator to stay on grade with single-lever digging. Upgrading to Cat Grade with Advanced 2D or Grade with 3D offers the ability to create and edit designs and efficiently complete more complex grading applications. All Cat Grade systems are compatible with radios and base stations from top third-party technology suppliers.

Operators can store up to four depth and slope offsets to quickly cut to grade without a grade checker.

Providing real-time weight estimates without swinging the boom, Cat Payload on-board weighing helps achieve precise payload targets to improve operating efficiency. It can be combined with VisionLink to remotely manage production targets.

Also, Cat Swing Assist automatically stops excavator swing at operator-defined setpoints in truck loading and trenching applications, increasing safety and conserving fuel.

Auto hammer stop warns operators after 15 seconds of continuous firing and then shuts off the hammer after 30 seconds to prevent unnecessary wear and tear.

The 330-kW (443-hp) engine and electrohydraulic system efficiently power through difficult materials. Auto dig boost increases bucket penetration by 8% when encountering resistance in the cut, and auto heavy lift increases lift capacity by 8%, which comes in handy when picking up heavy loads like sandboxes and pipe. Auxiliary hydraulic options allow the use of a wide range of Cat attach-

ments for greater versatility.

Three engine modes match excavator power to the demands of the job. The first, smart mode, automatically matches engine and hydraulic power to digging conditions to lower fuel consumption. Second, power mode, delivers maximum power to meet the most demanding tasks. Third, eco mode, reduces engine speed to a constant 1500 rpm to minimize fuel consumption.

Reliable performance, easy maintenance

Caterpillar claims that the 352 offers reliable performance in virtually any environment.

Remote troubleshoot and remote flash let dealers connect with the machine before traveling to a jobsite to diagnose fault codes and update operating software.

Also, Product Link automatically collects vital machine operating information like location, hours, fuel usage, idle time, maintenance alerts, diagnostic codes and machine health and shares it through web and mobile applications.

The excavator offers high ambient temperature capability of 52° C (125° F), cold-start capability at -18° C (0° F) and can work at up to 4500 m (14,764 ft) above sea level. Prolonging the life of machine components, auto hydraulic warmup gets the machine to work faster in cold temperatures.

The air intake filter with pre-cleaner features high dust capacity, and a high-efficiency hydraulic fan cools the engine on demand to reduce fuel consumption.

Long-life fuel, oil, and air filters combine with synchronized 1,000-hour oil and fuel filter service intervals to reduce downtime.

Cat claims that the extended intervals eliminate labour cost for nine oil and fuel filter changes and parts cost for 27 oil and fuel filters over 10,000 machine operating hours compared to many competitive models in its class. ■



Thank you to George Tackaberry of G. Tackaberry & Sons for their repeat purchase of an Astec CS3055 Portable Jaw Crusher.

(905) 670-3440

AMACOCEI.COM



High Reach Inc.

RENTALS ★ SALES ★ SERVICE

Tel: (905) 844-4164

www.highreachinc.com



Merry Christmas
& Happy New Year

CANADIAN DEALER FOR: ORION • VERSA-LIFT • BRODERSON

Canada's #1 used equipment inventory | brandtused.ca



2016 JOHN DEERE 944K
Unit #: RM675648
\$685,000



2017 JOHN DEERE 260E
Unit #: RQ682829
\$439,000



2012 DITCH WITCH JT3020
Unit #: 2U000588
\$215,000



2018 JOHN DEERE 410L
Unit #: 0U328684
\$110,600



2018 CATERPILLAR 568
Unit #: 0U800285
\$410,000



2017 JOHN DEERE 35G
Unit #: 0U280308
\$81,700



2019 JOHN DEERE 330G
Unit #: 0U344584
\$72,000



2020 KUBOTA SVL75-2
Unit #: 0U050248
\$79,900



2018 JOHN DEERE 872GP
Unit #: 0U689931
\$405,000




2012 JOHN DEERE 200D
Unit #: 0U513436
\$117,700



2013 SELICK S80
Unit #: MU917306
\$85,900



2015 JOHN DEERE 903M
Unit #: 0U271766
\$175,400



2016 TIGERCAT 630E
Unit #: 0U304383
\$115,000




2020 JOHN DEERE 859MH
Unit #: 0U381783
\$460,000



2017 CATERPILLAR 324DFM
Unit #: 1U001642
\$459,900



2015 JOHN DEERE 848L
Unit #: 0U671331
\$177,900



2010 JOHN DEERE 953K
Unit #: 1U187530
\$109,500



2005 JOHN DEERE 872D
Unit #: 0U597780
\$109,600



2012 JOHN DEERE 350G LC
Unit #: 0U808878
\$127,000



2019 JOHN DEERE 1050K
Unit #: 0U348885
\$815,800

WHAT HAPPENS AT CONEXPO STAYS AT CONEXPO.
BRANDT HOPES TO SEE YOU SOON IN VEGAS!



1-888-227-2638
FINANCING CUSTOMIZED, FLEXIBLE OPTIONS
FIND OUT MORE 1-855-711-4545





Ten Liebherr cranes help to build the largest timber campus in Europe

Ten Liebherr EC-B series tower cranes are being used for a EUR 650 million (CAD 921 million) project near Paris, France, known as the “Arboretum.”

The project is being described as a campus, with 1,000 planted trees and modern workplaces and is said to become the largest timber campus in Europe.

Having as many as ten cranes on a construction site requires precise planning for efficient site operation.

The top-slewing cranes, which will remain in operation until mid-2023, have to be coordinated with one another so that they don't interfere with each other's lifts. Just how flexible Liebherr's EC-B series can be is on impressive display in Nanterre, where flat-top cranes with different hook heights, jib lengths and load capacities are required. “We opted for Liebherr cranes because of our longstanding business relationship,” says Antonio Silva de Almeida, the site manager in charge. “Liebherr cranes are ideal for carrying out

this project because of their exceptional cost-effectiveness and safety standards.”

Liebherr customer GCC has two 220 EC-B 10s, two 250 EC-B 10s, one 250 EC-B 12, two 285 EC-B 12s, two 340 EC-B 12s and one 370 EC-B 12 in operation. The jibs in use are between 47.5 and 60 metres in length. Hook heights range from 41 to 59 metres. As a result of these configurations and their flat-top design, the cranes can rotate above each other without encountering any problems. The transport and assembly-optimised cranes can, depending on the model, lift a maximum of ten or twelve tonnes. A 280 EC-H 12 high-top crane is additionally in use for the construction of the service centre.

Anti-collision system and crane operator lift

To ensure optimal safety, all cranes are equipped with an anti-collision system from the French manufacturer AMCS technologies. The machines also include LiUP operator lifts, which particularly benefit

crane operators and service engineers working at high hook heights, as is the case here. LiUP is designed to transport two people or a load of 200 kilograms. It gives crane operators quick access to their workplace and spares service engineers a strenuous climb during maintenance work.


The “Arboretum” project on the banks of the Seine will provide 125,000 square metres of office and service space and will be mostly built of solid wood. The offices are set to be spread over five buildings and each of them will be named after a tree: Almond, Pine, Cedar, Fir and Spruce. A park, a fruit and vegetable garden for the use of campus restaurants, and two renovated industrial buildings will complete the area. The campus will offer ongoing contact with nature so that employees working there can relax and concentrate better. Measures designed to reduce the site's carbon footprint include the reuse of materials, bioclimatic architecture and a geothermal system that will cover up to 80 percent of heating and cooling requirements.

Precise positioning with Micromove

The construction of the new office buildings involves 20,000 cubic metres of wood from sustainably managed forests, as well as 55,000 cubic metres of concrete. All loads, some of which weigh several tonnes,



have to be moved, and this is where the Liebherr tower cranes come in. “The cranes are reliable and powerful, and the LiUP lift ensures a high level of safety,” says site manager Antonio Silva de Almeida.

The top-slewing cranes are being used for positioning timber and concrete elements such as posts, beams, columns, staircases and lifts. This work is supported by the Micromove fine positioning mode. The assistance system makes perfect use of Liebherr's own high-performance drives so that loads are moved with precision over the course of several minutes and positioned with accuracy. This protects precast filigree concrete parts and existing constructions on site. 





(705) 560-BULL (2855)
1510 Fairburn St. Sudbury, ON P3A 1N7
bullpowertrain.com

COME JOIN OUR TEAM! WE ARE CURRENTLY SEEKING EXPERIENCED COMPONENT REBUILDERS.

Authorized
SPICER
Off-Highway Service Center

KESSLER-CO

Authorized
SPICER
Off-Highway Service Center

FUNK
DRIVETRAIN
COMPONENTS

NEW HOLLAND
GENUINE PARTS

GWB

WE ARE YOUR AUTHORIZED SERVICE CENTRE FOR



We Manufacture OEM Driveshafts

 Authorized to perform warranty work

 Factory trained technicians

 OEM parts and components for all your off-highway equipment

BULL POWERTRAIN IS YOUR POWERTRAIN SPECIALIST FOR OVER 45 YEARS


shaw Bros.
QUALITY ATTACHMENTS
Barrie, Ontario
1-877-625-9677

BEST QUALITY AT THE LOWEST POSSIBLE PRICE

WE ALSO CARRY:

- Augers
- Breakers
- Brush Cutters
- Buckets
- Compactors
- Demolition
- Forest Mulcher
- Grapples
- Quick Couplers
- Rippers
- Compactors
- Rubber Tracks
- Thumbs
- Screw Pile Drivers

www.shawbros.ca
info@shawbros.ca



Compact Screening Systems

These bucket type attachments are used primarily for screening soil, compost and aggregates and bring an affordable, high quality and performance screening solution, with low or zero maintenance, to the compact attachment market.



SIMA
MIXER BUCKETS

Ideal for producing concrete in a practical way and makes it easy to transport where needed.

Available for any type of earthmoving machine:

- All loaders and skid-steers
- Telescopic lifts
- Excavator
- Tractors with front loaders

In takes just 3 minutes to mix components perfectly. Bucket capacity 100 to 2000 litres.



NIUBO
FOREST DIVISION

- Hydraulic Forestry Heads for Excavators 8-30 tons
- Hydraulic Head for Compact Loaders
- Hydraulic Brushcutter Head 2-8 tons
- Agricultural Attachments



Come visit us January 10-12 in Booth 1749

Big advantages for your smaller machines

Choosing a compact machine doesn't mean that you have to compromise size over power. That's why even our smallest tiltrotators are packed with the same efficiency-enhancing features that you would normally only find in larger tiltrotators. Turning small machines into powerful do-it-all tool carriers. Giving you precision and capacity in small spaces.

rototilt.com/tiltrotators

Rototilt® R1-R3

- Perfect for machines 1.5-6.5 tonnes
- Combining low weight and high capacity



New underground Tesla transportation system to enhance CONEXPO-CON/AGG experience

CONEXPO-CON/AGG has announced that it has officially sold all available exhibit space for the 2023 edition of the show and states that this will make it the biggest show in its history.

“The addition of the new West Hall and Diamond Lot at the Las Vegas Convention Center gave us, and our exhibitors, a number of new opportunities to show how we are taking the construction industry to the next level,” said Dana Wuest-

hoff, CONEXPO-CON/AGG show director. “Now at 2.8 million square feet of exhibits, there’s more for construction pros to see than ever before.”

The show, now nearly 5% bigger than the record set in 2020, will feature 1,800 exhibitors and 150 education sessions during its run from March 14-18, 2023.

On top of being its largest show ever, CONEXPO-CON/AGG believes that recent additions to the Las Vegas Convention Center (LVCC) will make it the easiest to navigate as well.

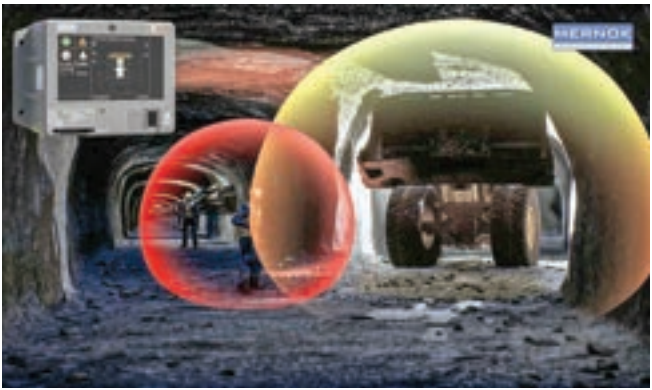
Beneath the entire LVCC campus runs the Convention Center Loop, an underground transportation system designed by Elon Musk’s The Boring Company that transports convention attendees throughout the campus in under two minutes in Tesla vehicles, free of charge.

“We are excited to welcome CONEXPO-CON/AGG back to Las Vegas for another record-setting event,” said Brian Yost, chief operating officer of

the Las Vegas Convention and Visitors Authority (LVCVA), which owns and operates the LVCC. “The addition of the West Hall and the Convention Center Loop will only further enhance the ‘Only Vegas’ experience for attendees and exhibitors.”

The current pace of attendee registration is nearly double what it was at this time for the 2020 show.

“This is the event that construction professionals, especially those making company-level decisions, and those needing professional development hours, can’t miss,” said CONEXPO-CON/AGG Show Chair and Caterpillar Senior Vice President Phil Kelliher. “Seeing the new equipment and techniques on a screen doesn’t compare to seeing it all in person. At the show, you can see the equipment, ask questions of the manufacturers themselves, and really understand what the equipment and education can do for your career and business.”



Epiroc to acquire leading provider of collision avoidance systems for mines

Epiroc has agreed to acquire Mernok Elektronik, a South African company that provides advanced collision avoidance systems for mining companies.

Epiroc claims this acquisition will strengthen its position as a provider of automation and safety solutions for mining operations.

Mernok Elektronik is headquartered in Pretoria, South Africa and the majority of its customers are in Africa.

The company designs and produces proximity detection technologies and collision avoidance systems of the highest level (EMESRT Level 9) applicable for either a single machine or an entire mixed fleet of machines regardless of manufacturer or type of equipment.

The systems are designed to significantly reduce the risk of vehicle accidents and strengthen operator safety and productivity.

Mernok Elektronik has about 45 employees and had revenues in the fiscal year ending February 28, 2022, of approximately ZAR 80 million (CAD 6.28 million).

“Collision avoidance is critical for the mining industry to strengthen safety and productivity, and Mernok’s advanced solutions complement Epiroc’s existing equipment and automation offering well,” says Helena Hedblom, Epiroc’s president and CEO. “Together we will provide complete collision avoidance solutions to the highest industry standards to support our customers on their journey towards the safest and most optimal operations. We look forward to welcoming the dynamic Mernok team to Epiroc.”

According to Epiroc, the acquisition is expected to be completed in the first quarter 2023.



Canada's Grader People

www.jadeequipment.com • info@jadeequipment.com

Proud Member 





THANK YOU FOR A GREAT YEAR!

It has been a very exciting year at Jade Equipment. With the addition of new staff members and some changes in job titles, Jade has been busy in the office, in the shop and on the road.

We have added two new service trucks to our fleet, which will keep our road techs in top shape to make it to all their service calls. New motor graders have been added to our rental lineup. Our Territory Sales Managers have been hard at work making new contacts, doing product demos and selling machines.

Jade Equipment would like to thank all of our customers for making 2022 a successful and productive year. We look forward to working with you in the year ahead and want to wish everyone a Merry Christmas!

DO YOU KNOW ABOUT THE JADE STANDARD?

Our years in the factory and in the field give us unmatched insight into the true value of used machines, component assemblies and parts. Before we ship used grader parts to our customers, each item is individually inspected, cleaned and evaluated for condition and serviceability. Our “Jade Standard” is a range of multi-point inspection procedures that provide whole-goods customers with a consistent quality benchmark for used motor graders and other construction machinery. Our inspection criteria are based on our thorough knowledge of original factory criteria and test standards.



Visit www.jadeequipment.com to see examples of our used grader inspection standards or call us to learn how your fleet can benefit from the Jade Standard.

Edmonton, Alberta Toll Free: 1-800-663-0715 • Orillia, Ontario Toll Free: 1-866-404-5233

10807-209 St, Edmonton, AB T5S 1Z7
Tel: 780-452-7021 • Fax: 780-453-1477

47 Forest Plain Road, Oro-Medonte, ON L3V 0R4
Tel: 705-325-2777 • Fax: 705-325-9777





**“BOBCAT MACHINES
HAVE LOTS OF POWER!”**

Matt Villeneuve, general manager, construction, A.L. Blair Construction Ltd., paused on-site for a photo in the Bobcat E50 R2 series compact excavator with their Bobcat sales specialist, Marc-Antoine Castonguay from Bobcat of Ottawa Valley.

A.L. Blair has four divisions, A.L. Blair Construction Ltd., Blair Asphalt Products Ltd., TRP Ready Mix Ltd, and Blair Land Development. Originating in Moose Creek, Ontario, Arthur Blair started the company in 1932 and is still currently a proud family-run business providing customers with high-quality aggregate products across Eastern Canada from their various quarries and pits. Their A.L. Construction division specializes in excavating, site works, road construction and custom crushing.



When Matt Villeneuve, general manager, construction, was asked why they chose Bobcat® machines and what they like about operating them, he replied “Bobcat machines have lots of power! 3x4’ stone walls and the bucket with thumb picked them up with no problem=POWER! I love operating the Bobcat machines, especially the new Bobcat E50 R2 series compact excavator. It’s like a mini excavator and skid steer combined. We use it to excavate and trench for water/ sewer services, including residential houses where there is very little space. The bucket is very versatile, and you get a lot of different attachments. Both our paving crew and grading crew have a Bobcat T740 compact track loader as it is a handy tool machine for fine grading, paving, loading and unloading materials on sites.”

“We had originally bought a wheeled Bobcat skid-steer years ago for our quarry and because of the service Bobcat of Ottawa Valley provided us with that machine, and the extra bonus of having three locations near us, we went to them when we were

ready to purchase Bobcat machines for our construction division. During Covid, Marc-Antoine Castonguay, sales specialist for Bobcat of Ottawa Valley really went out of his way to help us. He provided us with another machine until our new one came in. He delivers parts and materials to us so fast. He provides us with really great service! We wouldn’t hesitate to recommend Marc-Antoine Castonguay and Bobcat of Ottawa Valley for your next machine purchase.

Thanks Matt.



YOUR LOCAL AUTHORIZED BOBCAT DEALERS



BARRIE

Bobcat of Barrie
705-726-2228
OakenEquipment.ca

FRANKFORD

John’s Equipment
613-398-6522
johnsequipmentsales.com

MUSKOKA

Bobcat of Muskoka
249-390-7000
OakenEquipment.ca

STRATTON

Stratton Equipment
807-483-5505
stratttonequipment.com

BRANTFORD

Bobcat of Brantford
519-752-7900
bobcatofbrantford.com

GREY BRUCE

Bobcat of Grey Bruce
519-372-9100
bobcatofgc.com

OTTAWA

Bobcat of Ottawa Valley
613-831-5166
bobcatov.com

SUDBURY

McDowell B Equipment Ltd.
705-566-8190
bmcdowell.com

CASSELMAN

Bobcat of Ottawa Valley
613-764-2033
bobcatov.com

HAMILTON

Bobcat of Hamilton
905-643-3177
bobcatofhamilton.com

PARRY SOUND

Bobcat of Parry Sound Ltd.
705-342-1717
bobcatofparrysound.com

TORONTO EAST

Bobcat of Toronto
416-679-4171
OakenEquipment.ca

CORNWALL

Bobcat of Ottawa Valley
613-932-2034
bobcatov.com

KITCHENER

Bobcat of Tri-Cities Ltd.
1-866-214-3939
bobcatofkc.com

PETERBOROUGH

Bobcat of Peterborough
705-748-9119
bobcatofpeterborough.com

TORONTO WEST

Bobcat of Toronto
416-679-4172
OakenEquipment.com

COURTICE

Bobcat of Durham East Ltd.
905-404-9990
bobcatofdurhameast.com

LONDON

Bobcat of London
519-455-4900
bobcatoflondon.ca

STRATFORD

Bobcat of Stratford
519-393-6040
bobcatofstratford.ca

WINDSOR

Bobcat of Windsor
519-737-0120
OakenEquipment.ca



AUTHORIZED DOOSAN DEALERS

ALBERTA
BROWN'S INDUSTRIAL SALES
780-875-2339
doosanddealers.com/Lloydminster

780-826-2399
doosanddealers.com/Cold-Lake

DOOSAN OF THE PEACE
780-538-0791
doosanddealers.com/Grande-Prairie

MANITOBA
AGCON EQUIPMENT
204-255-4772
doosanddealers.com/Springfield-MB

C&C RENTALS
204-728-2699
doosanddealers.com/Brandon

NEW BRUNSWICK
PAUL EQUIPMENT AND SONS
506-826-3289
doosanddealers.com/Balmoral

506-449-3289
doosanddealers.com/Fredericton

NOVA SCOTIA
EAST COAST INTERNATIONAL TRUCKS INC.
902-478-3552
doosanddealers.com/Dartmouth

BRITISH COLUMBIA
DOOSAN OF THE PEACE
250-785-1197
doosanddealers.com/Fort-St-John

WESTERRA EQUIPMENT
604-850-7313
doosanddealers.com/Abbotsford

250-314-3600
doosanddealers.com/Kamloops

250-716-0443
doosanddealers.com/Nanaimo

WILLIAMS MACHINERY
250-563-0181
doosanddealers.com/Prince-George

604-930-3300
doosanddealers.com/Surrey

778-721-0398
doosanddealers.com/Terrace

ONTARIO
BOBCAT OF HAMILTON LTD.
905-643-3177
doosanddealers.com/Stoney-Creek

C G EQUIPMENT
519-826-0550
doosanddealers.com/Guelph

519-236-4934
doosanddealers.com/Zurich

EASTROCK EQUIPMENT INC.
613-737-3963
doosanddealers.com/Ottawa

G F PRESTON SALES & SERVICE
705-384-5368
doosanddealers.com/Sundridge

HARTINGTON EQUIPMENT
613-372-2744
doosanddealers.com/Hartington

ITEC 2000 EQUIPMENT
807-768-8584
doosanddealers.com/Rosslyn

READYQUIP SALES & SERVICE LTD.
705-268-7600
doosanddealers.com/Timmins

NORTHWEST TERRITORIES
RON'S AUTO SERVICE LTD.
867-766-6025
doosanddealers.com/Yellowknife

QUEBEC
ÉQUIPEMENTS PLANNORD
450-464-8000
doosanddealers.com/fr/Beloeil

418-878-4007
doosanddealers.com/fr/St-Augustin-de-Desmaures

MACHINERIE ST. PIERRE
819-824-6931
doosanddealers.com/fr/Val-d'Or

SASKATCHEWAN
BOBCAT OF REGINA, LTD.
306-347-7600
doosanddealers.com/Regina

EARTHWORKS EQUIPMENT CORPORATION
306-931-7880
doosanddealers.com/Saskatoon

YUKON
DOOSAN OF WHITEHORSE
867-633-4426
doosanddealers.com/Whitehorse

The new Doosan® dozer delivers more horsepower, better visibility and easier operation to help you push through your biggest challenges.
Contact your local Doosan dealer for details.

Learn more at NA.DOOSANEQUIPMENT.COM

©2022 Hyundai Doosan Infracore. All rights reserved.
Hyundai Doosan Infracore is an affiliate of Hyundai Heavy Industries Group.
The Doosan trademark, **DOOSAN**, is used under license from Doosan Corporation.

New Komatsu XT-5s offer power and maneuverability in demanding conditions

With a lower centre of gravity and off-set boom, Komatsu’s new XT-5 tracked harvesters are designed to allow operators to harvest closer to the carrier and maneuver confidently.

Made to perform in demanding conditions, Komatsu’s XT-5 closed loop tracked harvesters enable operators to simultaneously travel, cut, delimb, harvest and swing timber.

Also, engineered with hydraulic lines for each function, operators can use tracks, boom, arm and tools concurrently.

The short-tail swing of Komatsu’s 331 hp harvesters lets operators work through

dense forests and clear-cutting environments.

Furthermore, the set-back boom allows operators to perform cutting close to the undercarriage and tracks, while, according to the company, the powerful swing torque excels in demanding applications.

The harvesters can be adapted to the job with two different working ranges. For example, operators can use the short reach and larger-scaled head to harvest larger trees or switch to a longer reach and more compact head to grab trees further from the carrier.

Additionally, the XT455L-5 is equipped with a heavy-du-

ty, four-way leveling system that promotes front/rear/side leveling for exceptional stability. The fuel tank placement lowers the center of gravity for enhanced stability.

Lower maintenance costs

Komatsu claims that with the XT-5 harvesters, owners and fleet managers can save on maintenance costs because the innovative hydraulic tank system design requires 55% less hydraulic oil.

Also, pumps are equipped with hydro-nucleation to help prevent pump cavitation and are 17% larger to help extend component

life by operating 500 rpms slower.


In terms of accessibility, the engine gull-wing and wide swing-out doors on the XT-5 harvesters offer quick access to all engine service points and all key components.

Operator comfort and customization

According to Komatsu, the work environment of the XT-5 harvesters can help reduce fatigue and support productivity by giving operators a roomy, comfortable workspace.

Also, excellent visibility and powerful heating, cooling and defrosting systems



are said to help operators work to their full potential. When operators switch, the controls can be adjusted for each operator by setting preferences to many of the machine’s features and mechanics, including the joystick, boom, stick, tool tilt, swing and cab leveling. 

Vermeer adds water kit option for CS GT vacuum excavators

Vermeer has expanded the capabilities of its CS GT vacuum excavators with an optional water kit.

Now, horizontal directional drilling (HDD) crews and light-duty vac operators can soft dig (pothole) utilities, as well as power wash equipment and hard surfaces with this economic vac system.

The optional water kit for the Vermeer CS GT comes with a 100-gal (378.5-L) freshwater tank and a pump capable of delivering 2,500 psi (172.37 bar) at a flow rate

of 3.5 gpm (13.2 L/min). The water kit is factory installed and available on all new CS GT models.


“A strong fiber market and the need to pothole underground utilities has many contractors adding vacuum excavators to their fleets,” said Jake Jeffords, director of sales, marketing and global accounts at Vermeer MV Solutions. “The CS GT is a popular model for HDD crews as an economical solution for slurry management and disposal. Now they can do even

more with this unit. The optional water kit makes the CS GT a great machine for performing light potholing work for HDD contractors. But other contractors will benefit from the water kit, too.”

There are two models of the CS GT. The Vermeer CS870 GT vacuum excavator comes with an 800-gal (3,028.3-L) spoil tank, while the Vermeer CS1270 GT vacuum excavator comes with a 1,200-gal (4,542.5-L) tank.

Each model in the CS GT series features a 580 CFM

(985 m³ /hr) PD blower with a 3-in (7.62-cm) diameter hose for efficient operation and each is powered by a 27-hp (20.1-kW) Kohler gas engine and built on a robust I-beam trailer.

The Vermeer CS GT vacuum excavators also feature a rear hydraulic claw door with an over-centre locking mechanism for no-fuss locking and unlocking while dumping spoils. There is also an optional reverse pressure control to assist with off-loading spoils and dislodging debris in the hose. 



Canada’s Amalgamated Mining Group to supply Sandvik underground equipment in the US

Amalgamated Mining Group will provide rental underground equipment from Sandvik including loaders, trucks, underground drills and bolters to customers in the USA.

For more than 30 years Amalgamated Mining Group (AMG), headquartered in Edmonton, Canada, has been an industry leader in providing creative equipment and parts options to clients globally.

With more than 300 machines in inventory, AMG has a wide range of options to suit their clients’ operations. Their expansion into the USA within the mining and tunnelling industry has been a focus for some time now.

AMG’s plans include opening facilities for their sales group, such as a rebuild

facility as well as a parts and components division.

AMG will be carrying a variety of units to suit various needs, ranging from more compact units, such as a Sandvik LH203 loader, to larger machines, such as Sandvik TH545i trucks.

“With Sandvik’s diverse line of equipment we are able to provide our clients with a full range of offerings from mine startup right through to mine closure options,” said Colin Elson, vice president of Amalgamated Mining Group. “Our alliance with Sandvik has proven very successful in Canada and it was a natural progression to extend that partnership into the USA.”

“AMG brings years of solid customer relationships, knowledge and commitment to the mining sector,” said

Wes Vietmeier, business line manager, Load and Haul at Sandvik Mining and Rock Solutions. “Working with

AMG will allow us to address new markets and rental purchase opportunities.” 



**AUTHORIZED DISTRIBUTOR**

**ALL MAKES ALL MODELS**

POWERTRAIN SPECIALISTS

TRANSMISSIONS - AXLES - STEERING

PARTS - EXCHANGE - REBUILDS

TARTEN EQUIPMENT LIMITED

6199 Shawson Drive Mississauga, ON L5T 1E5

Phone: 905 670 1704 Fax: 905 670 4790

Toll Free: 1 888 670 1704 WWW.TARTEN.COM

COMMITTED TO SERVICE EXCELLENCE SINCE 1976

**416-644-3076****gearequip.com**

**MCR SERIES EXCAVATORS: 6MCR / 8MCR / 10MCR**
Operating Weight: 13,500 lbs / 16,755 lbs / 22,050 lbs
Max Depth: 10'1" / 12'1" / 13'1"

**AS SERIES SWING LOADERS AS600 / AS750 AS850 / AS900TELE / AS1000 / AS1600 / AS210**
Operating Weight: 9,700 lbs - 33,006 lbs
Engine Power: 49.5 hp - 174 hp

**NEW****106MRAIL / 136MRAIL / 156MRAIL / 216RAIL**
Operating Weight: 20,889 lbs / 28,285 lbs / 36,067 lbs / 44,860 lbs
Lifting Height Capacity: 10' / 9'10"

**BACKHOE LOADERS-SIDESHIFT TLB870 / TLB880 / TLB890 / TLB990**
Operating Weight: 16,964 - 19,345 lbs
Max Depth: 18'0" - 18'8" / Break-out Force: 9,442 - 12,454 lbf

2214 Line 9, Bradford, ON L3Z 2A5 / 19067 94th Avenue, Surrey, BC V4N 3S4



Wajax signs agreement to become exclusive Citymaster dealer

Wajax Corporation has signed an agreement with Minutemen International to become the exclusive official dealer of the Hako Citymaster line of outdoor cleaning machines across Canada.

The Citymaster product line offers a range of cleaning products for outdoor and municipal cleaning tasks.

Also, Citymaster offers sweepers and machines made for municipal use, with a compact design and turn radius that allow for

simple driving and navigation.

The product line is built for customization and flexibility through a wide inventory of easily installed attachments.

According to Wajax, the company the Citymaster's products fall in line with Wajax's continued efforts to market and sell brands that are environmentally and worker safe.

"Wajax firmly believes in working with companies and organizations that can offer sustainable, user-friendly products" says Brian Kolthof, vice president of material handling at Wajax. "The Hako Citymaster line is a great example of the type of machines we want to be able

to offer to our customers. These machines are sustainable, safe, and still operationally effective, and that's a perfect fit for what we are looking to accomplish here at Wajax."

"We are extremely excited that Wajax has agreed to distribute the Hako Citymaster product range across Canada," says Jack Hill, president & CEO of Minuteman International. "We started doing business with Wajax back in 2019 with the PowerBoss industrial brand and they have proven to be a great partner. Wajax has not only proven they can produce outstanding sales results, but their commitment to after sales service is what has been most impressive."



Hilltip adds new SweepAway push broom attachments

Hilltip has added the new SweepAway push broom attachments—a versatile clean-up solution for use on forklifts, tractors, loaders, excavators and other vehicles.

According to Hilltip, these tools provide professional results when sweeping a variety of materials, such as leaves, sand, rocks, debris, snow and slush.

Offered in multiple sizes from 59 to 118 inches wide, the SweepAway push brooms are available in a light series with eight

brush rows or a medium series with 12 brush rows. Featuring polypropylene bristles, the replaceable brush rows are easy to change and clean. Additionally, the brooms contain no moving parts, resulting in practically no maintenance requirements.

Optional accessories for the SweepAway push brooms include side brushes (leaf-stopper brushes), fastening straps and edge markers. Replacement brush rows are also available from Hilltip.

TRAMAC
www.tramac.com



SERVING THE CONSTRUCTION, DEMOLITION & MINING INDUSTRIES FOR OVER 55 YEARS

FEATURING A **FULL LINE OF HYDRAULIC ROCK BREAKERS**
FOR CARRIERS RANGING FROM **1 TON TO 120 TON CLASS**



FOR DEMOLITION,
EXCAVATION, MINING,
CONSTRUCTION & QUARRIES.

**TRAMAC HAS
AN ATTACHMENT
FOR THAT.**

CANADA

Shaun Brown

Cell: (613) 532-4823

Office: (613) 542-1500

shaun_brown@tramac.com

Ontario office:
(613) 542-1500
28 Steve Fonyo Dr., Kingston, ON
K7M 8N9

Montreal Office:
(888) 663-8122
3421 Industriel Boulevard, Laval,
Que. H7L 4S3

Quebec City Office:
(418) 877-5557
1711 rte de L'aéroport #4,
L'ancienne Lorette, Que. G2G 2P4

**YOUR
HYDRAULIC
ATTACHMENT
EXPERTS**

Doosan ready to introduce new global brand and products

Doosan Infracore North America will introduce the company's new global brand and logo, as well as several new products at CON-EXPO-CON/AGG 2023 in Las Vegas.

The company's new name and logo will integrate new brand values and its commitment to creating the smart construction solutions of tomorrow. Visitors to the exhibit at CONEXPO will be able to see the new brand in action, hear the story of why the new name was chosen and see what's next for the company.

"Fans of our current offerings will be delighted that the equipment will remain unchanged

and continue to deliver the powerful, reliable solutions admired worldwide," says Alice Banach, senior marketing manager, Doosan Infracore North America.


Exhibit highlights

The Doosan exhibit in the outdoor festival grounds area will showcase a sampling of the company's full line of construction equipment, the exclusive transparent bucket for Doosan wheel loaders, a battery-powered engine and several new machines, including the company's dozer line. Attendees are encouraged to stop by the exhibit to see how Doosan continues to evolve as a single source

provider of the latest construction equipment. Cutting-edge technologies such as Concept-X demonstrations, safety features and electrification will be featured. The Doosan exhibit will showcase autonomous equipment, the new Smart X-Care fleet management service and the topography-scanning drone Concept-X Xite Cloud.

The Concept-X autonomous worksite will feature three live demonstrations each day, along with other new products. First exhibited in 2019 with an autonomous Doosan® wheel loader and excavator, Concept-X is a smart control solution to tomorrow's

worksites. It can survey worksite topography via 3D drone scanning, establish operational plans based on that data, and operate heavy construction equipment such as excavators, wheel loaders and articulated dump trucks without human intervention.

Concept-X technology paves the way to the worksite of the future with equipment-driven construction sites, freeing human personnel to tackle complex data analytics and management tasks. Continuous Concept-X demo pit footage will be played simultaneously on a large screen and a three-screen brand tower in the Doosan exhibit. 



Feds invest \$1.5M in Ontario equipment manufacturer expansion

Today, the Federal Economic Development Agency for Southern Ontario announced an investment of over \$1.5 million for TS Manufacturing Company, a Lindsay-based, family-owned, 'one-stop shop' manufacturer of quality equipment for the forest products industry worldwide.

This investment will allow TS Manufacturing to obtain advanced manufacturing equipment to expand production. This will help the company fill a need in the market by offering automated solutions, such as a first-in-the-world robotic lumber sorter, to small- and medium-sized customers that have been traditionally under-served by equipment manufacturers.

"When we invest in Canadian manufacturers, like TS Manufacturing, we are directly increasing Canada's potential and economic growth. This first-of-its-kind innovation fills a gap in the lumber industry, strengthens Canada's competitive advantage, and drives growth in the local economy—and our Government could not be prouder to be investing in this future together," said The Honourable Filomena Tassi, Minister responsible for the Federal Economic Development Agency for Southern Ontario.

Also, according to the Government of Canada, this project will boost local supply chain spending, reduce waste in lumber production and strengthen the regional economy in Lindsay and the Kawartha Lakes.

This funding will help bolster the success of the manufacturing industry in the Kawartha Lakes and Peterborough regions and create economic growth for years to come.

TS Manufacturing is a major employer in the region, with more than 100 staff. This project will add an additional 10 skilled jobs.

"We've experienced significant growth over the past few years and this funding allows us to scale-up our production capacity to meet demand for our solutions," said Kris Smith, VP of manufacturing at TS Manufacturing Company. "We are investing in advanced equipment and expanded infrastructure which will create jobs and allow us to produce the highest quality machinery for the sawmill industry. We are pleased to have

the Government of Canada's support for this project; it is a fantastic way to celebrate our 50th anniversary and look ahead to our future." 

FOR FREE PASS TO LOC, SCAN QR CODE & USE VERMEER'S VIP # VERM1760





VISIT US AT BOOTH #1760



VERMEER ATX720 COMPACT ARTICULATED LOADER

Gross horsepower: 25 hp
Engine: Kubota D1305
Operational Weight: 3911 lbs
Outreach w/horizontal boom: 46.6"
Turning radius: 32.5-82.3"
Rated operated capacity articulated: 2072 lbs or straight : 2155 lbs

VERMEERCANADA.COM





Bucyrus Blades™ Snow Plow Edges





ESCO® Manganese Crusher Wear Parts



Wear Parts Ltd.

lswwearparts.com

Fredericton, NB
506-458-5613

Truro, NS
902-895-4913

www.esco.weir

Copyright © 2022, ESCO Group LLC. All rights reserved.

Saskatchewan's Doron Broadfoot to receive ARA's most prestigious award

Each year, the American Rental Association (ARA) honours individuals for outstanding service to the association and the rental industry.

This year, two long time rental industry leaders, Doron Broadfoot and James "Jim" Ziegler, will become the newest inductees into the Rental Hall of Fame and will be honoured at The ARA Show 2023 in Orlando.

The Rental Hall of Fame was created in 2000 to honour those individuals who have changed the trajectory of the equipment and event rental industry.

Each year, nominations are accepted to recognize outstanding industry leaders who have made a substantial and lasting impact on the industry's success and growth at the national and/or international level.

"The Rental Hall of Fame is ARA's most prestigious award. This year, we are honoured to recognize two

individuals whose vision and leadership has made a significant impact on the equipment and event rental industry. Their dedication has been felt across the rental community and I would like to personally thank and congratulate them," says Tony Conant, ARA CEO.

Doron Broadfoot, The Rent-It Store, Saskatoon, Saskatchewan

Doron Broadfoot has been a member of the rental industry for more than 50 years, with it all starting in 1972 when he began working for his father at The Rent-It Store in Saskatoon.

In 1974, he invested in a business owned by Acklands-Grainger.

When the company decided to close—leaving employees out of work—Broadfoot and his business partner, Doug Mitchell, decided to postpone their retirement and purchased the business in 2005.

Throughout his career, Broadfoot always has encouraged both employees and business partners to get involved with ARA and the Canadian Rental Association (CRA).

He is being recognized for his leadership and long-term dedication and service to ARA, CRA and the ARA Foundation.

Broadfoot was CRA president from 1989-1990 and then served as the ARA Region 10 director from 2000-2003.

According to the ARA, he is a huge supporter of the ARA Foundation both as a volunteer and a donor.

Furthermore, he served on the ARA Foundation board of trustees for two terms from 2009-2014 and sat as the chair of the board in 2011 and 2012.

He established the Region 10 Doug Mitchell scholarship in honor of his late business partner in 2014.

In recognition of his phil-

anthropic efforts, he has received the ARA Foundation James Keenan Award five times and the 1976 Club Award 10 times.

James "Jim" Ziegler, Rental City, Boulder, Colorado

Jim Ziegler started his career in the rental industry in 1969 when he bought an A-Z Rental franchise in Boul-

der—which would eventually become Rental City.

Ziegler built Rental City from the ground up and after 30 years, he sold the company to NationsRent in 2000.

Also, Ziegler was the CEO of RenTrain, a business he developed to help reduce insurance costs and improve operating techniques through educational pro-

grams for rental equipment dealers and provide websites for small businesses.

Ziegler has been actively involved with ARA and the ARA of Colorado for years, having served on the ARA of Board of Directors from 1988-1992 and as the 29th ARA president in 1990. While on the ARA of Colorado board, he also served as president. ■



Caterpillar autonomous solutions to be deployed in aggregates industry

Caterpillar has announced a collaboration with Luck Stone, a family-owned and operated producer of crushed stone, sand and gravel, to deploy Caterpillar's autonomous solution to Luck Stone's Bull Run Plant in Chantilly, Virginia.

This will be Caterpillar's first autonomous deployment in the aggregates industry and will expand the company's autonomous truck fleet to include the 100-ton-class (90-tonne-class) Cat 777.

Caterpillar will implement its existing Cat MineStar Command for Hauling system on a fleet of 777G trucks.

Looking to accelerate autonomous solutions beyond mining, Caterpillar will implement its existing Cat MineStar Command for Hauling system at the Bull Run quarry, on a fleet of 777G trucks. This will allow Caterpillar to gain greater insights on quarry operations in order to tailor the next generation of autonomous solutions specific to quarry and aggregate applications. This project supports the acceleration of autonomous technology for operations with fewer mobile assets to allow a step change in safety and productivity, as currently experienced at large mining operations.

"Luck Stone and Caterpillar's partnership has been grounded in shared values for many years," said Charlie Luck, president and CEO

of Luck Companies. "Together we believe that safety, innovation and a commitment to people are critical, not only to propelling important projects like this, but to ensuring our focus on the future and all of the exciting possibilities technology affords our industry. Our collaboration will provide opportunities for associates to learn and grow, improve safety and result in production efficiencies. We are thrilled to partner with Caterpillar to achieve this 'first' for our industry."

"Caterpillar has a long-standing relationship with Luck Stone, and we look forward to working together to bring the demonstrated benefits of increased safety and productivity to the quarry industry. We're excited to get in the dirt and work alongside Luck Stone's innovative team, so we can learn how to scale our already proven mining solution for another industry," said Denise Johnson, president of Caterpillar Group's Resource Industries.

According to Caterpillar, the current autonomy solutions will be implemented in 2024. This project builds on Caterpillar's long history in autonomy and automation.

Caterpillar's fleet of autonomous haul trucks now numbers more than 560, which have traveled more than 187 million kilometres and autonomously moved more than 5.1 billion tonnes. ■

FLOlink AUTOLUBE REMOTE MONITORING

DIRECT WIRELESS DATA ACCESS

- ✓ Telematics monitor for low level & system failure
- ✓ Monitors any number of systems
- ✓ Emails fault alerts to any number of users
- ✓ Instant access to alert notification history
- ✓ Generates & exports alert reports instantly
- ✓ Can be used with most brands of autogreasers

Video

ALS Components by: LINCOLN

Mississauga: 1.800.668.5458 Winnipeg: 204.832.3040 sales@flocomponents.com

BUYING AND SELLING USED CONSTRUCTION EQUIPMENT SINCE 1971

HARDING EQUIPMENT INC.

450-437-8848

hardingequipment@sympatico.ca
FAX: 450-430-5352

Seasons Greetings

AND BEST WISHES TO ALL OF OUR CUSTOMERS AND FRIENDS
FOR A HAPPY HOLIDAY SEASON AND OUR SINCERE THANKS
FOR YOUR FRIENDSHIP, LOYALTY AND GOOD WILL THROUGHOUT THE YEAR.

<p>1981 OSHKOSH R, c/w CAT 825 HP rear eng, 400 hours, 5000 tph capacity. \$65,000.</p>	<p>1978 SMI 5250, GM - GM, low hours, fresh paint. \$29,000.</p>	<p>1979 SMI 5250 GM-GM, single cab, good condition. \$39,000.</p>	<p>1999 VOHL DV-4000, loader mount, J.D. diesel. \$65,000.</p>	<p>1979 SMI BM-2200 GM-453, low hours, ex-municipality. \$23,500.</p>
<p>SMI BK-3200 new augers, new impeller, bad motor (parts only). \$11,500.</p>	<p>1983 VOHL DV-4000, J.D. motor, tel-chute. \$39,000</p>	<p>1996 SMI 8400, 4000 tons per hour, G.M - G.M, 710 hp. \$105,000</p>	<p>1975 CAT 14G, good runner. \$57,500.</p>	<p>1983 WESTERN STAR 6x6, Cummins 270 HP, 18-46 axles, good condition! \$57,000.</p>

A JOHN DEERE COMPANY



We're passionate about your success

THE NEW COLD MILLING MACHINES FROM THE MARKET LEADER | W 210 Fi



- > The innovative MILL ASSIST machine control system guarantees low operating costs.
- > Unique two-speed DUAL SHIFT powershift transmission enables extremely high milling output and reduces pick wear.
- > Achieve new standards of quality with the new LEVEL PRO ACTIVE leveling system.
- > MCS expands the machine's broad range of applications by making it possible to quickly switch milling drums or the milling drum unit.

> www.wirtgen.com/milling

JOIN US AT



Booth#: S5020
March 14-18, 2023
Las Vegas, NV
Learn more and register at:
www.conexpoconagg.com

WIRTGEN AMERICA, INC. • 6030 Dana Way • Antioch, TN 37013 • Telephone: (615) 501-0600



“The best feature of our JCB equipment is **less downtime.**”

SHERRY BARKER - CE BARKER

Better? It's something we all strive for. But to be better you must be efficient. Be productive. Be versatile. Be dependable. And you need equipment that supports you **every step of the way**, no matter how big or small the task. Because good enough is never good enough.

Check out our full line of JCB products at your local dealer or visit **JCB.com** today.



YOUR FAMILY OF LOCAL JCB DEALERS

ALBERTA

Liftboss JCB
Calgary: 403-301-0041
Edmonton: 780-474-9900
liftboss.ca

BRITISH COLUMBIA

RDM JCB
Surrey: 604-576-8566
rdmjcb.com

NEW BRUNSWICK

A.L.P.A. Equipment
Edmundston : 506-735-4144
Balmoral : 506-826-2717
Fredericton : 506-452-9818
Moncton, N.B. : 506-861-2572
alpaequipment.com

NOVA SCOTIA

A.L.P.A. Equipment
Truro : (902) 897-2717
alpaequipment.com

NEWFOUNDLAND

Harvey JCB
Corner Brook: 709-639-2960
St. Johns: 709-738-8911
harveyco.ca

ONTARIO

Advance JCB
Waterloo: 519-742-5878
Harriston: 519-510-5878
advanceequipment.net

D&W Group Inc.
Doughty & Williamson
Jarvis: 519-587-2273

Brant Tractor
Burford: 519-449-2500
Redtrac International
Vineland: 905-562-4136
dwgroup.ca

ONTARIO

Delta JCB
Dunvegan: 613-527-1501
Renfrew: 613-432-4133
Winchester: 613-774-2273
deltapower.ca

Hub International Equipment Ltd.
Lindsay: 705-324-6136
Port Perry: 905-982-1500
hubinter.com

Fulline JCB
Glencoe: 519-287-2840
fullinefarm.com

Jade Equipment
Oro-Medonte/Orillia:
705-325-2777
jadeequipment.com

John's Equipment Sales & Service
Frankford: 613-398-6522
johnsequipmentsales.com

ONTARIO

Moore JCB
Toronto, York & Peel
Region: 416-747-1212
moorejcb.com

ReadyQuip Sales & Service Ltd.
Timmins: 705-268-7600
readyquip.com

WPE Landscape Equipment - JCB
Hamilton/Halton: 905-628-3055
wpeequipment.ca

PEI

A.L.P.A. Equipment
(506) 861-2572
alpaequipment.com

QUEBEC

A.L.P.A. Equipment
Bas-Saint-Laurent :
(506) 735-4144
Gaspésie : (506) 826-2717
alpaequipment.com

Bossé Quebec Inc.
Desmaures: 418-878-2241
Saint-Augustin-de-
bosse-frere.com

Moore JCB
Montreal: 514-333-1212
moorejcb.com

SASKATCHEWAN & MANITOBA

Westcon JCB
Regina: 306-359-7273
Saskatoon: 306-934-3646
Winnipeg: 204-694-5364
westconjcb.com

toromontequip.com

HOT DEALS OF THE MONTH!



2006 CAT D3GLP DOZER \$72,000 4,717 HRS SUDBURY, ON



2007 CAT D5GXL DOZER \$52,000 7,636 HRS CAMBRIDGE, ON



2006 KOMATSU D65EX15 DOZER \$60,000 11,089 HRS DARTMOUTH, NS



1997 CAT BG240C PAVER \$12,500 7,156 HRS LONDON, ON



1985 CAT 140G GRADER \$62,000 18,318 HRS WINNIPEG, MB



1999 CHAMPION 740A GRADER \$34,000 17,249 HRS CHICOUTIMI, QC



2002 VOLVO G740 GRADER \$43,500 17,946 HRS CAMBRIDGE, ON



2017 DEERE 2154D FORESTRY \$183,300 10,040 HRS THUNDER BAY, ON



1994 CAT PM565 COLD PLANER \$50,000 12,116 HRS WINNIPEG, MB



2005 VOLVO EC210BLC EXCAVATOR \$56,000 13,329 HRS CONCORD, ON



2011 DEERE 85D EXCAVATOR \$76,000 7,558 HRS OTTAWA, ON



2012 KOMATSU HB215LC1 EXCAVATOR \$55,600 13,450 HRS CANDIAC, QC



1987 CAT IT28B WHEEL LOADER \$28,500 10,386 HRS POINTE-CLAIRE, QC



2011 CAT 938H WHEEL LOADER \$63,000 20,781 HRS OTTAWA, ON



2006 CAT 545C SKIDDER \$75,000 12,454 HRS SAULT ST. MARIE, ON



1996 TIMBER JACK 450C SKIDDER \$49,000 9,306 HRS ORILLIA, ON

USED AND RESTORED PARTS

Recent arrivals

- 330B Rebuilt Swing drive p/n 114 1441
- 938, 950, 962 GP buckets, new take off's
- New CAT 420 pin on front bkt, c/w bolt on edge
- Numerous Fusion couplers, IT couplers all new take off's
- 446D Side Dump new Cat unused 1.25 cu/yd
- 430E 30" rear bucket, new CAT
- Numerous Hydraulic cylinders rebuilt, Excavator and loader.
- Numerous new Cat surplus cutting edges and bucket teeth.

\$6,950 exchange
\$6,200 and up
\$950 ea
\$1,800 ea
\$16,500
\$1,800

Transmissions (rebuilt & tested)

- Rebuilt 950G trans, 114 8945
- Rebuilt IT28G trans p/n 2013318
- Rebuilt 928G trans p/n 177 0017
- IT18F transmission (1082075)
- 988B Transmission p/n 3P9094
- 924 transmission rebuilt. p/n 1807503
- 980C rebuilt, p/n 6Y3197 h/d arrange.
- New arrivals for tear down, 966H, 324D, 980G, 930H.

\$18,300 exchange
\$13,500 exchange
\$14,500 exchange
\$10,500 exchange
\$25,850 outright
\$11,200 exchange
\$22,700 exchange

Final Drives & Differentials

- 740 Final Drive, reconditioned, p/n 3710565
- 324D Rebuilt final drives, new bearings/seals
- 365B Rebuilt final drive, P/N 136 2956 (2)

\$22,500
\$10,500
\$18,500 ea

- 345 Final drive 227 604
- 319/320/321/323 p/n 3530611 final drive open & insp

\$24,000
\$8,900

CALL: 705 436-7770 or 1 800 771-9145

Andy EXT. 8747 Greg EXT. 8752 Joe EXT. 8748

ALL IN ONE PLACE! › toromontequip.com › 1 833 953-7847



HUGE INVENTORY



WEEKLY DEALS



CAT CERTIFIED USED



TOROMONT EQUIP

TOROMONT



*US pricing subjected to actual exchange rates at time of sale. All units are subject to prior sale.



**Loved for the features.
Trusted for the performance.**

"We have a Hyundai 290 excavator with well over 17,000 hours on it, and it's still running like a dream. It's a prime example of the longevity of this equipment. It's built right."

Ryan Williams
Owner, Full Circle Aggregates

See the Hyundai difference yourself at
your local dealer or hceamericas.com.



Bob Mark New Holland
bobmark.ca
42 Center St
Sunderland, ON L0C 1H0
705-357-3121

1138 County Rd. 41
Napanea, ON K7R 3L2
613-354-9244

551 Grand Road
Campbellford, ON K0L 1L0
705-653-3700

2197 Little Britain Rd
Lindsay ON K9V 4S5
705-324-2221

Delta Power Equipment
deltapower.ca
11250 County Rd. 43
Winchester, Ontario K0C 2K0
613-774-2887

297 Thompson Rd. West
Waterford, Ontario N0E 1Y0
519-443-8622

7565 Quaker Road
Sparta, Ontario N0L 2H0
519-775-2601

5458 Line 34 / Highway 8
Mitchell, Ontario N0K 1N0
519-348-8467

Delta Power Equipment
6974 Forest Road
Warwick Twp, Ontario N0N 1J4
519-786-5335

516 Talbot St. North, County Rd. 34
Essex, ON N8M 2X7
519-776-5238

Hood Equipment Canada Inc.
hoodequipmentcompany.net
14 Haniak Road
Thunder Bay Ontario P7K0C8
888-413-5454

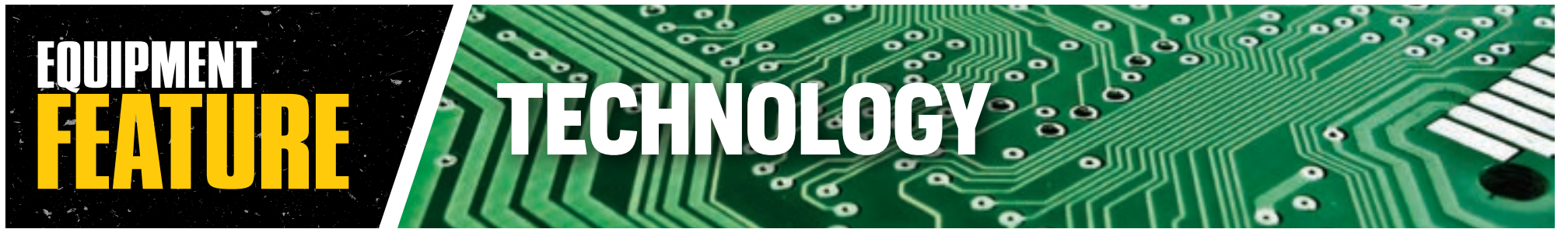
1355 Riverside Drive
Timmins, Ontario P4R1A6
705-288-4685

RTI Equipment Solutions, Inc.
2528 Bowman St.
Innisfil, Ontario L9S 0H9
705-734-3350



**Ontario, Canada
Hyundai Dealers**

 **HYUNDAI**
CONSTRUCTION EQUIPMENT
www.hceamericas.com



Manitou takes first step toward integrating hydrogen technology

Manitou Group has laid out its roadmap for research and development on hydrogen-powered machines and presented its first prototype telehandler running on green hydrogen.

Energy transition acceleration

With a target of reducing greenhouse gas emissions by 34% per hour of use of its machines in 2030, Manitou Group has set off on an ambitious course that is in line with the commitments of its low-carbon trajectory communicated in January 2022.

Following on from the recent electrification of its all-terrain platform and telehandler ranges, the company is also looking to hydrogen technology as a medium-term alternative for its users.

Manitou Group wants to see its electric and hydrogen ranges side by side depending on each user's applications, with a target of 43%

low-emissions products marketed in 2030.

A dedicated hydrogen development plan

By kitting its test centre out with a green hydrogen station, the company now has the means for testing its brand new prototype telehandler. The first step of this plan involves guaranteeing range and reliability in real-life conditions, while testing the durability of components.

The Group based this first prototype on an existing model from its range of construction machines, capable of lifting loads up to 14 m. According to the company, this machine will be tested and sent out to construction sites by the end of 2023 to collect feedback from users and improve on the prototype.

The two types of hydrogen technology are currently being evaluated by the market are the combustion engine and the fuel cell. The Group's

first prototype is built around a fuel cell, but the company claims that it will choose the hydrogen solutions that best meet the needs of its customers.

"We are studying all the hydrogen-related technologies based on what users need. This prototype is only the first step. A second rotating telehandler prototype will be developed in the coming months," explains Michel Denis, managing director of Manitou Group. "There are many benefits of green hydrogen with production possible using wind power that has no greenhouse gas emissions at all. This fits in perfectly with our low-carbon trajectory".

The company claims that, with this first prototype, it is showcasing its ability to innovate in order to measure the autonomy of this new energy while offering its customers the hydrogen solution that best meets their needs.

Almost 50 engineers and technicians are dedicated to this approach, which was launched in 2021.

To come up with an innovative solution that can be fully industrialized, the company hopes to rely on the support of the public authorities to develop an emerging ecosystem.

"The green hydrogen sector is gradually becoming more established with the entry onto this market of a number of players. All of the aid mechanisms proposed by the different governments will encourage the transition to hydrogen, and will speed up the development of the distribution network and ultimately the reduction in the usage costs of our machines using this energy," said Julien Waechter, vice president of research and development for Manitou Group.

Additionally, with these new

facilities, Manitou Group is aiming to offer its customers new innovative prospects, with a 100% hydrogen-powered telehandler available on the market by 2026.

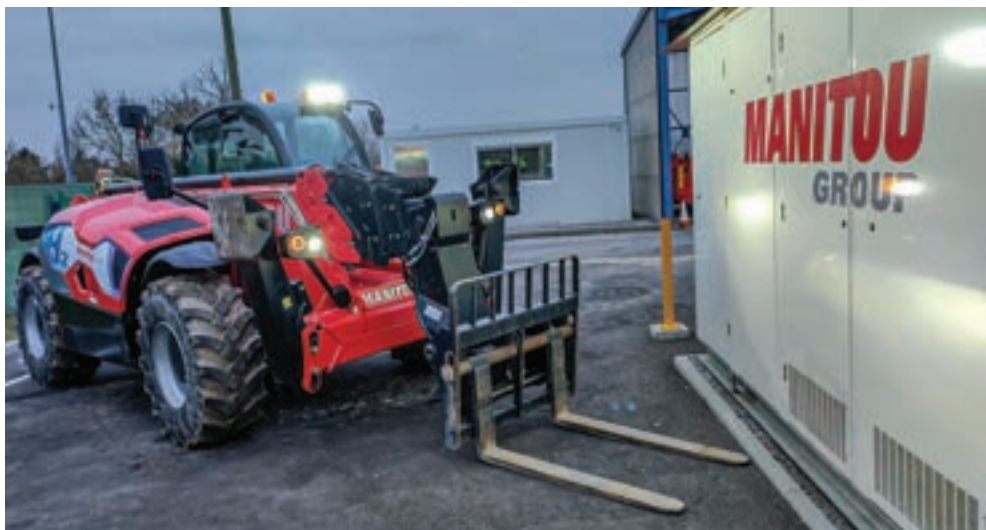
Investing in innovation

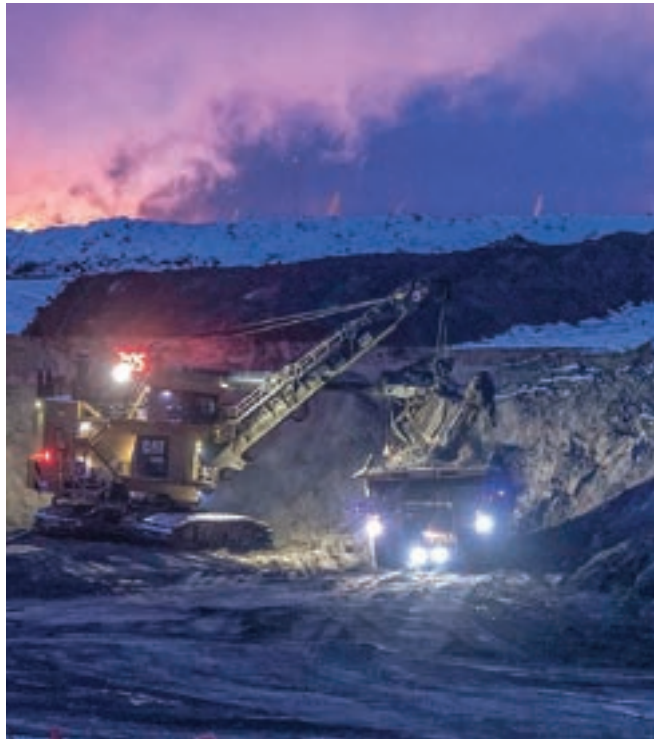
Manitou Group has over 350 engineers on its team and the company invests almost EUR60 million (CAD87 million) a year in all of its 10 research and development centres around the world.

The modernization of its production units is something the company claims essential to ensuring its ability to innovate.

Manitou group recently announced a EUR150 million (CAD217 million) investment plan for production sites in the US and France.

Before this, the company's last investment of this kind was in an aerial work platform factory, which opened in 2022. ■





Caterpillar teases high-tech showcase planned for CES 2023

Walking the aisles of the Las Vegas Convention Center's West Hall during CES 2023, the sight of the big, 100-ton Cat 777 off-highway truck will be a new and welcome addition to the automotive technology area.

Also, Caterpillar will showcase its innovative Cat MineStar Command for hauling technology inside the truck, which allows it to safely haul materials autonomously.

According to the company, the showcase represents

more than 560 Cat autonomous trucks that each day travel a distance equivalent to twice the Earth's circumference, without a driver.

Over the last nine years, trucks equipped with Command have hauled more than 5 billion tonnes of material, and today Caterpillar has the world's largest single fleet of autonomous trucks operating at one site.

"CES, the proving ground for breakthrough technologies and global innovators, is the ideal place for us to

showcase our high-tech leadership," comments Denise Johnson, group president of Caterpillar Resource Industries. "People have seen us as an equipment company for more than a century, and they are now realizing that we are a high-tech company as well."

Senior Vice President of Caterpillar Resource Industries, Marc Cameron, adds: "We help miners unearth materials found in everything from the smartphone displays to batteries for

electric vehicles that are exhibited at CES. Caterpillar and our diverse team of talented people are making a positive impact on our world, and CES gives us a platform to showcase our people and growth opportunities within the company."

Autonomy, technology, and sustainability will take center stage in Caterpillar's roughly 6,300 sq ft exhibit January 5-8, 2023. Beyond autonomous haulage, the company will showcase construction and mining safety, fleet management technologies, equipment health options, high-precision guidance technologies and material tracking solutions.

"Our technologies are changing the world by advancing autonomy, finding new ways to keep people safe, improving fleet productivity and building solutions that manage every aspect of an operation," Tony Fassino, group president of Caterpillar Construction Industries adds. "In addition to the fully autonomous mining trucks, we offer solutions that automate and provide remote operation of dozers, wheel loaders, excavators,

and skid steer and compact track loaders. Along with the productivity and safety benefits, automation is another way we can contribute to helping our customers build a better, more sustainable world."

The Caterpillar exhibit experience

The exhibit's centerpiece, the autonomous Cat 777 truck, dwarfs the size of vehicles in nearby automotive displays. Like autonomous cars, autonomous mining and construction vehicles operate without a driver on board. Further, autonomous mining trucks operate 24/7 in some of the most extreme environments and safely navigate where there are no lane lines to follow.

Four themed experiences help guide attendees through the booth.

- Big Solutions highlights Caterpillar's leadership in developing the most advanced technologies in the world
- Big Innovation showcases why Caterpillar is a recognized leader in autonomous mining
- Big Responsibility cov-

ers how the company's technologies help build a better, more sustainable world

- Big Opportunities focuses on the people creating the high-tech solutions

Attendees can stand inside the 777's truck bed and experience the big impact Cat technologies are making in the mining and construction industries, as well as the positive impact mining makes on our world. iPad stations will offer an augmented reality experience with each iPad focusing on a different subject. They include:

- Cat autonomy and technology
- Sustainability and the environment, incorporating safety and power solutions
- Size and scale of mining machines and how technology makes them safer and more productive
- The results of Cat autonomous solutions

Cat Command technologies will be featured in real time, using two remote operating stations connected to equipment hundreds of miles away. One station will remotely operate a Cat large dozer, while the second—a single universal station that can operate multiple types of Cat construction equipment—will be remotely connected to a Cat excavator. Caterpillar experts will be on hand to help attendees learn more about these technologies.

Attendees will also learn how Caterpillar is expanding autonomy to help lead the energy transformation, launching multiple initiatives with customers to develop battery electric vehicles. "The next frontier for autonomy is helping mines manage power needs as more assets require electricity to operate," says Johnson. ■

REMANUFACTURED TORQUE CONVERTERS

ALL CANADIAN SINCE 1963

Diesel Performance For Pickup Trucks

SUPER FAST 24 HR TURNAROUND TIME

- All Construction Equipment
- All Material Handling Equipment
- All Mining Equipment
- All Forestry Equipment
- All Trucks & Vans

ALL MAKES

JOHN DEERE • CAT • CLARK
• FUNK • JCB • ZF • ALLISON

ConverterMan LIMITED

peter@converterman.com

246 Brockport Dr #21 Toronto, ON M9W 6W2

416-674-7000 | 800-265-8923

RingHX
A Division of Sutton Stomart Ltd.

We are your complete radiator and heat exchanger maintenance and servicing company.

Our technicians are specialists in:

- Radiators
- Charge Air Coolers
- Oil Coolers
- Air Cooled Heat Exchangers
- Shell & Tube Heat Exchangers
- Plate & Frame Heat Exchangers
- Brazed Plate Heat Exchangers

Call now to speak with one of our heat exchanger experts!

(647) 370-1483

LEADERS IN THE REPAIR OF INDUSTRIAL RADIATORS AND HEAT EXCHANGERS

www.ringrad.com

V O L V O



2018 VOLVO L90H Stk#2027152
2,260 hrs \$225,000



2011 VOLVO L90F Stk#2022687
14,000 hrs



2018 VOLVO L70H Stk#2027151
3,763 hrs



2018 VOLVO L60H Stk#2027311
1,047 hrs \$192,500



2016 VOLVO L180H Stk#2029462
12,663 hrs



2021 VOLVO EW60E Stk#2022013
16 hrs \$145,500



2019 VOLVO L60H Stk#2027303
346 hrs \$228,000



2018 VOLVO L60H Stk#2027313
1,162 hrs \$192,500



2011 VOLVO EW180C Stk#2030405
6,934 hrs \$167,500



2020 VOLVO EC200E Stk#2030804
960 hrs \$255,000



2018 VOLVO L60H Stk#2027304
448 hrs \$230,000



2018 VOLVO DD110C Stk#2011762
1,583 hrs \$132,900



L220F REBUILT TRANSMISSION
1 Year Strongco Parts Warranty



A30D, A25D REBUILT TRANSMISSION
1 Year Strongco Parts Warranty



2020 VOLVO EC480EL Stk#2020024
2,229 hrs \$485,000



2014 VOLVO L70G Stk#2031820
5,119 hrs \$145,000

VOLVO USED EQUIPMENT & COMPONENTS

Your one-stop dealer.
From machinery to service, parts and certification.

Your trusted partner for every project.

FOR
MORE
INFO

CONTACT J.J LYONS
jjlyons@strongco.com
(844) 288-4241

Connect with us





HUGE INVENTORY
Used Equipment | New equipment



AFTER SALES SUPPORT
In-Field service | In-Shop service



PARTS INVENTORY
Genuine OEM parts & major
components available in stock

STRONGCO®

NORS

ASK US ABOUT FINANCING OPTIONS
*Terms & Conditions apply

WWW.STRONGCO.COM

ALBERTA ONTARIO QUEBEC ATLANTIC



Mammoet develops real-time emissions reporting for heavy lifting equipment

Mammoet has developed a new technology platform that reports emissions data from heavy lifting equipment in real time. The system allows customers to accurately predict and monitor carbon output arising from large heavy lifting and transport projects.

Project planners looking to meet increasingly strict emissions regulations have needed to rely on estimates of total emissions, drawn from the make and model of equipment involved and

how long they have been used. Mammoet's new technology increases the accuracy of this reporting by using data taken directly from the embedded electronics of on-site equipment.

The system, codenamed DAISY, transmits this data over mobile networks from local devices attached to the embedded systems of cranes and SPMT combinations. This can then be accessed from any worldwide location, providing a clear audit

trail for governments and other authorities.

This allows organizations working at locations where emissions are regulated tightly, such as inner cities, tunnels and indoor facilities, to minimize emissions at the project site. Analysis of this data will uncover new ways to cut down emissions-driving activity, for example by reducing idling time during projects.

The system is currently in use in the Netherlands, monitoring the carbon emissions

of a fleet of mobile cranes. It is planned for rollout across Mammoet projects according to customer demand during 2023.

"DAISY will be the most advanced system to accurately report CO2, NOx and NH3 emissions at equipment level at the operating location, improving on the generic approach the industry is currently using," said Jacques Stoof, head of innovation at Mammoet. "Based on the actual reported emissions, clients will be given the



option to choose for a more sustainable, less emitting fuel type in order to minimize their emissions footprint during construction."

This development is another aspect of Mammoet's commitment to enabling the energy transition, providing the tools and insight needed by our customers to work towards key 2030 and 2050 climate targets.

"With this significant step we are able to assist clients and empower our own reduction ambitions," added Mathias Hoogstra, head of sustainability. "DAISY's fac-

tual emissions data allows us to take smarter decisions, reducing our footprint in a more efficient manner. This helps our clients and ensures we achieve our sustainability goals towards 2030."

The launch of DAISY follows Mammoet's recently-announced partnership agreement with energy company Vattenfall to develop new wind farm cranes powered from renewable sources, and the completion of the world's first heavy transport project undertaken using a fully electric driven SPMT combination. 



TRI-CITY EQUIPMENT

519-767-9628

YOUR HEAVY EQUIPMENT RENTAL HEADQUARTERS!

Tri-City Equipment is a 100% privately owned Canadian corporation.

1-800-646-2064

CALL OR TEXT

RYAN ARMISHAW
(519) 240-4672

DAVE ZAPPITELLI
(226) 962-6106

FULL SERVICE REBUILD SHOP, AFTERMARKET PARTS & REPAIRS AVAILABLE



FOR RENT

84" Padfoot Roller - smooth drum also available. 54" and 66" also available.



SNOW READY! **FOR RENT/SALE**

CAT 12M - multiple units available.



FOR RENT

25, 30, 40, 45 TON TRUCKS - available with tailgates + floatation tires.



FOR RENT

HITACHI ZX490 - Q/C, aux., hyd. choice of bkt. CAT 349 also available.



FOR RENT

CAT 336 - Next Gen - grade control, q/c, choice of buckets - Hitachi ZX350 also available for rent.



FOR RENT

60 FOOT LONG REACH - choice of buckets, 250 & 300 sizes available.



SNOW READY! **FOR RENT**

CAT 930/950 - aux hyd, available w/bucket or blade.



FOR RENT

2020 LINKBELT 145 X4, Blade, zero tail, Q/C, choice of buckets.



FOR RENT

CAT 318 Wheeled Excavator - VA Boom, Q/C, aux., hyd. Choice of attachments.



SNOW READY! **FOR RENT**

KUBOTA SVL65 - Available with bucket & blade - SVL75 also available for rent.



FOR RENT

CAT D5K LGP - grade control, A/C, 6 way blade.



FOR RENT

CAT D6T - 6 way blade, ripper, grade control. D6N also available.



FOR SALE

BUCKETS - Brand new and used for most classes. Hammers also available.



FOR SALE \$115,000

2006 VOLVO A25D - approx 18,500 hrs. Currently working daily. Serviced and ready to go!



\$133,000

2018 HITACHI ZX135 - Zero tail, Q/C, choice of buckets, approx. 4150 hrs.

WE BUY EQUIPMENT!   **TRI-CITYEQUIPMENT.COM**



Bobcat of Muskoka opens in Bracebridge

Bobcat of Muskoka recently celebrated its official grand opening, hosting an event attended by community members and Bracebridge mayor, Rick Mahoney.

Located off Highway 118 West, Bobcat of Muskoka is Oaken Equipment's fifth dealership in Ontario and is now part of Canada's largest Bobcat dealer network, which includes two Bobcat of Toronto locations, Bobcat of Windsor (Windsor-Essex County) and Bobcat of Barrie (Simcoe County).


"Bracebridge is a great community, and we are excited to bring the Bobcat experience to the area," said Jeff Pettegrew, branch manager of Bobcat of Muskoka. "Our goal is to help our customers be successful,

while also providing our dealership and employees opportunities to get involved with activities and organizations that support the Muskoka-area community."

Oaken Equipment president Kai Sørensen is excited about the addition of the new location: "We are pleased to continue to grow and become part of the Muskoka community so we can further serve customers in the region," said Sørensen. "Bobcat has the best equipment in the industry and our customer base has continued to grow throughout Ontario. It was the right next step for us to add a new location in Bracebridge and expand our expertise and team into the area." 

EQUIPMENT JOURNAL

CONNECT WITH US!

Visit us at:
www.equipmentjournal.com

CM Labs to address workforce and productivity issues at CONEXPO-CON/AGG 2023

CM Labs Simulations has announced that it will introduce new training solutions at CONEXPO-CON/AGG 2023 in Las Vegas. Designed for the construction, infrastructure, and utility markets, the new training packs look to address critical workforce and productivity issues.

“Now, more than ever before, CM Labs’ customers need the best possible operator learning outcomes—quickly and safely,” said Lisa Barbieri, VP of marketing and product management. “Our physics-based Smart Training technology and advanced reporting insights from our Instructor Operation Station (IOS) will future-proof training programs and recruitment needs.”

According to the company, these insights are made possible due to the accuracy of CM Labs’ smart training

technology embedded in its simulators.

Comprised of proprietary and patented algorithms, the smart training technology is designed to offer training based on real data and real machines and deliver skills transferable to real equipment.

At the show, CM Labs plans to demonstrate its full suite of simulation training products and feature several new products in ‘simulation pods’ within its booth.

Also, the company will be introducing attachment additions to its excavator training pack and new digger derrick and telehandler training packs.

Excavator attachments

Two additions to the excavator training pack are a grapple tool and 360-degree tiltrotator. The grapple simulation helps trainees learn basic control functions of

this attachment and learn to sort and manipulate a wide range of materials.

The tiltrotator uses 360-degree rotation and side-to-side swivel when used in combination with other excavator attachments.

Also, the tiltrotator simulator function teaches precision grading techniques with the bucket. “This is great training support for roadbuilding and utilities contractors,” said Alan Limoges, construction product manager.

Digger derrick

A new digger derrick training pack highlights various auger-drilling scenarios, an essential piece of equipment for utility contractors. Exercises include control familiarization, auger control, pole control and setting, as well as training support for the Electrical Industry Certifications Association (EICA) certification process.

Telehandler

Making its debut is a telehandler training pack, featuring fixed, telescopic boom with forks and bucket attachments. The telehandler simulation exercises offer various steering modes and load-handling activities.


Instructor Operator Station

Instructor Operator Station (IOS) enables trainers to monitor, assess, and engage trainees from a single workstation.

It integrates with any of CM Labs’ training simulators, and updates to the

IOS allow remote instructor monitoring, live multi-user curriculum management, as well as new back-end reporting features.

Also, the IOS supports

trainers with objective insights on key metrics related to safety violations, fuel efficiency, cycle times, and managing excessive wear and tear on equipment. 



Jeff Lillycrop, CPPA
905-977-8402
jblappraisalservices@gmail.com

TRUCKS, MACHINERY AND EQUIPMENT APPRAISALS
USPAP Compliant and CPPAG Certified
On-Site Orderly Liquidation Services

www.jblservices.ca



KEEP CHIPPING AWAY.



CALL US FOR SALES, PARTS AND SERVICE.
m-k.com | (800) 263-5011

Your equipment is where the money gets made. M-K Power keeps your tree service equipment running perfectly, so your business never takes a cut.





EQUIPMENT JOURNAL
NATIONAL HEAVY EQUIPMENT NEWS, DELIVERED SINCE 1966

Phone: 1-800-667-8541
Email: office@equipmentjournal.com

Auctioneers



Crane Sales & Rentals



Equipment Rentals



Components, Engines & Parts / Service & Repairs



Safety

Heavy Equipment Dealers





Attachments



Heavy Equipment Manufacturers



Website link on equipmentjournal.com for \$500/year or \$300/year (plus applicable taxes) with your paid advertisement in **Equipment Journal**.

POWER AND EFFICIENCY WITHOUT COMPROMISE



**5-YEAR/5,000 HOUR
Full Machine Warranty**

**5-YEAR/10,000 HOUR
Machine Structures Warranty**

Visit us in the West Tower,
36th Floor, Suite #3607 at

2023 AED
SUMMIT
JANUARY 10-12, 2023 | HYATT REGENCY CHICAGO



Operating Weight: 56,900 lbs || Net HP: 160 hp || Max Dig Depth: 21'10" || Reach at Ground Level: 31'9"

- 10% cycle time improvement to get your work done quicker.
- 5% better fuel consumption without a Diesel Particulate Filter (DPF) to maintain or replace.
- X4's all new hydraulic system features electronically controlled pumps that take hydraulic efficiency to the next level.
- Isuzu engine that utilizes a cooled EGR system with minimal maintenance in mind and with minimal DEF consumption.
- Cab designed for shift-long comfort.
- Equipped with RemoteCARE® (GPS fleet management system). Free lifetime coverage to original owner.
- WAVES (Wide-Angle Visual Enhancement System) option for a 230° visual.
- X4's have a beefed up undercarriage.

Your LINK-BELT Excavators Dealer has all the details!

ALBERTA

Equipment Sales & Service Ltd.
Edmonton (780) 440-4010
essltd.com

BRITISH COLUMBIA

The Inland Group
Burnaby, BC 604-291-6431
Campbell River, BC 250-287-8878
Castlegar, BC 250-365-2807
Cranbrook, BC 250-426-6205
Fort St. John, BC 250-785-6105
Kamloops, BC 250-374-4406
Kelowna, BC 250-769-2933
Langley, BC 604-607-8555
Nanaimo, BC 250-758-5288
Penticton, BC 250-492-3939
Prince George, BC 250-562-8171
Quesnel, BC 250-992-7256
Terrace, BC 250-635-5122
Vernon, BC 250-545-4424
Williams Lake, BC 250-392-7101
inland-group.com

NEW BRUNSWICK

Paul Equipment
Balmoral (506) 826-3289
paulequipment.ca

ONTARIO

Itec 2000
Rosslyn (888) 574-8530
Thunder Bay (888) 574-8530
Timmins (705) 267-0223
itec2000.com

McDowell B Equipment Ltd.
Sudbury (705) 566-8190
Barrie (416) 770-7706
bmcdowell.com

**Stratton Equipment
Sales & Service**
Stratton (807) 483-7777
strattonequipment.com

Top Lift Enterprises Inc.
Stoney Creek (905) 662-4137
Bolton (905) 857-5200
toplift.com

QUEBEC

Équipement JYL Inc.
Chicoutimi (418) 698-6656
equipementjyl.com

Micanic
St-Aug-D-Desm (418) 878-2241
micanic.com

Paul Equipment
(506) 826-3289
paulequipment.ca

Top Lift Enterprises Inc.
St-Laurent (514) 335-2953
Sherbrooke (819) 612-5438
toplift.com

YUKON TERRITORY

The Inland Group
Whitehorse, YT 867-668-2127
inland-group.com



Link-Belt
EXCAVATORS
www.lbxco.com/warranty

EQUIPMENT FEATURE

LANDSCAPING

KUBOTA CANADA LAUNCHES NEW SVL75-3 COMPACT TRACK LOADER

Kubota Canada has announced the launch of its new SVL75-3 compact track loader—a redesigned model that features an updated cab and new hydraulic system.

“We felt it was important to develop an adaptive piece of equipment that helps operators easily transition from one job to the next,” said Jonathan Gardner, construction equipment product manager for Kubota Canada. “Features such as the new hydraulic system, reliable Kubota engine and easy-to-maintain design will help set the SVL75-3 apart from the competition as we continue to bring more innovations to the compact loader space.”

“The SVL75-3 combines outstanding performance and productivity with spacious operator room and comfort with an advanced multifunction operation,” said Barry Greenaway, director of construction for Kubota Canada’s Commercial & Residential Products. “The newly designed, one-piece pressurized cab—complete with a new 7” multi-function LCD monitor, optimal air flow for temperature regulation and standard rearview camera and radio—keeps the operator top of mind, providing a smooth and dependable experience each and every time.”

Greater versatility, productivity and performance

The SVL75-3 features a new 74.3HP Kubota engine with higher maximum torque, allowing for work to take place quickly and efficiently. The cooling and variable fan optimizes engine efficiency by adjusting the fan speed to maintain the appropriate water and oil temperatures.

Also, a reversing fan option is available to keep the engine running at optimal performance.

The hydraulic system features an innovative Advanced Multifunction Valve (AMV) that provides smooth movements of all hydraulic functions when operated simultaneously. The AMV allows auxiliary hydraulics, bucket and loader arm to function together without stalling, improving the machines performance and productivity.

The SVL75-3 has excellent workability, featuring a higher hinge pin height of 122.7 in, standard self-levelling functions, a high-flow hydraulic option and faster speed for increased productivity.

The robust travelling features include an auto-shift system enabling travel shift when turning for maximum traction and productivity.

Additionally, the equipment is backed with the new track response—giving operators the ability to change their travel response sensitivity—and a welded main-frame and undercarriage with no exposed hoses.

Advanced technological features

The Electronic Torque Management System lets the operator work faster with

more power by constantly monitoring the machine load to optimally control hydraulic pump output according to the load. This helps prevent engine stalls for smoother operation even under severe conditions.

Updated technology builds on the success of Kubota’s Intelligent Control System, utilizing a color 7” LCD touch panel with jog dial as standard equipment. Operators can view machine vital signs, track maintenance schedule, choose their favourite radio station and view what’s behind them with the standard rear-view camera.

Also, owners and fleet managers can protect their investment by setting up different user profiles with passcode start—with up to 51 different user codes programmed—and adjusting to their skill.

Prioritizes operator comfort

Kubota’s SVL75-3 was designed with the operator in mind, featuring a one-piece sealed and pressurized cab with sliding

front door, wide cab entrance, LED lights and high visibility roof panel. The one-piece cab reduced the noise level in the cab to 78 dBA.

Additional features include:

- The SVL75-3 Compact Track Loader can connect to a variety of Kubota attachments including an auger, power rake, snowblower, snowpusher, cold planer, box blade with Trimble Earth-Works Go 2D grading system and more.
- Easy maintenance options from pre-cleaner to reversing fan, door enclosed fuel tank and bigger air cleaner.
- Telematics is available for the SVL75-3, with KubotaNow allowing users to see machine location, set a geo-fence, remote inhibit machine and view machine vital signs.
- According to Kubota, the new SVL75-3 will be available at its authorized dealers at the end of spring 2023. ■





Rent vs. Buy: Which Offers the Best ROI?

10 Factors to Consider When Determining Whether to Rent or Buy a Mini Excavator

By Jeff Pate, Director of Sales for Yanmar Compact Equipment North America

Mini excavators' compact size and versatility make them a popular choice for the construction industry. There are a large variety of attachments available allowing them to tackle

almost any task on the job-site. Although choosing from so many different models and configurations can be a challenge, one of the biggest decisions contractors may face is whether to rent or buy the mini excavator.

On average, about 25% of contractors choose to rent their mini excavators while

75% choose to buy the machine. Some businesses get the best of both worlds by purchasing the mini excavator size class they use most frequently and renting additional machines during busy seasons to supplement their fleet. While there are benefits to both renting and buying, there are details to be aware of to determine which option will offer the greatest ROI.

When Renting a Mini Excavator May be Best

There are several reasons an operator may choose to rent a mini excavator instead of buying it. With a relatively low upfront cost and flexibility to return the equipment at any time, contractors can reap many of the benefits that come with owning a mini excavator. Whether it's to save money during a slow economic period or to increase productivity on a quick-turn project, certain

conditions warrant a strong rental consideration.

It's a Short-Term Task

Assess the utilization needs before deciding to buy or rent a mini excavator. If this is a short-term task and the machine won't have many uses afterward, renting can be a better choice. To better understand what qualifies as a short-term task, estimate the machine's annual hour usage and the amount of revenue that it would generate. Is that significantly less than what it would cost to buy the mini excavator? If so, renting may be the best option.

Money is Tight

Buying any capital equipment requires a substantial financial investment so opting to rent provides an economical alternative for those looking to save on upfront costs. Depending on the amount of time the equipment will be used, the cost of renting a mini excavator can be significantly less than the purchase cost; that translates to thousands of dollars of savings right from the beginning. Renting a mini excavator also means there's no need to worry about insurance costs, interest allocation or the sales tax that comes with purchasing a mini excavator.

You're Looking for Less Commitment

The beauty of renting is that operators aren't chained down to one machine. Since there's no long-term commitment involved, rental contractors can change out machines based on the

projects that arise or new configurations introduced to the market instead of finding attachments for their existing fleet or purchasing additional equipment.

Maintenance is a Pain Point

When renting a mini excavator, most if not all maintenance and service requirements typically fall under the responsibility of the rental center. This means contractors can focus on the job at hand without worrying about scheduled downtime for servicing. Renting can also be a benefit if unforeseen challenges arise with the machine where repairs are needed. Instead, contractors can simply return the unit and obtain a comparable replacement.

When Buying a Mini Excavator May be Best

Although renting a mini excavator involves less time, upfront costs and maintenance, purchasing a mini excavator as a long-term investment is sometimes the better option. With benefits such as having full control over when the machine is used and maximizing ROI with different attachments, buying a mini excavator can be an excellent strategic move for a business. This is especially true in market conditions with high economic growth. Here are some indicators buying a mini excavator is the best choice for you.

Future Utilization Opportunities

Similar to determining if renting is best, it's import-

ant to look at the big picture when

considering buying compact equipment. Buying often comes with financing payment cycles that can last several years so looking ahead at future utilization opportunities is critical to determining return on investment. For example, if the monthly bill for the equipment is \$1,200 and you'll be working enough billable hours to cover that cost or more each month, buying is likely the best long-term choice.

More Flexibility with Scheduling

Contractors that work in a variety of industries such as utility work, residential and commercial construction, roadwork and municipality projects should consider buying a mini excavator instead of renting. With the versatility mini excavators provide when paired with different attachments, the equipment can easily be used in multiple jobsite applications, which means the benefits of owning one are even greater for businesses that do it all. Purchasing also means the machine is available 24/7 whenever the contractor needs. With renting, there's always a risk that the rental company won't have the right machine available when it's needed, but those who own their own equipment can have peace of mind knowing they are ready to go when the work comes in.




AUTHORIZED DISTRIBUTOR

CONSTRUCTION EQUIPMENT RENTAL

DOZERS - LOADERS - BACKHOES - ROLLERS

CUSTOMER SERVICE

TARTEN EQUIPMENT LIMITED

6199 Shawson Drive Mississauga, ON L5T 1E5
 Phone: 905 670 1704 Fax: 905 670 4790
 Toll Free: 1 888 670 1704 WWW.TARTEN.COM

COMMITTED TO SERVICE EXCELLENCE SINCE 1976



HYDROEXC
EQUIPMENT SERVICES LTD.
SINCE 1998

THANKING ALL OUR LOYAL CUSTOMERS FOR A GREAT 2022 & WISHING EVERYONE A VERY MERRY CHRISTMAS & HAPPY NEW YEAR!

ALLIED ATLAS COPCO BTI CAT CP EPIROC ESCO INDECO NPK
 KENT MUSTANG OKADA RAMMER ROCK RAM STANLEY TRAMAC

HYDROEXC.COM

LOOKING BACK AT LANDSCAPING

By HCEA Canada



In the postwar era of the 1950s, a housing boom was well underway in North America. Once, the home's were mostly finished the lots needed top soil and grass. So grew the landscaping Industry, and, along with it, the equipment manufacturers geared up. Pictured here, this Oliver OC-3 crawler tractor was equipped with a hydraulic front blade and rear box blade. A rather awkward set-up for the operator with the piping and hydraulic hoses going everywhere, but it worked! It was powered by a Hercules gas engine rated at 18.6kW (25hp) on a good day. The Cleveland Tractor Company began manufacturing in 1911 and by the next decade had changed its name to 'Cletrac'. They went on to build large bulldozers that could compete with Caterpillar & Allis Chalmers. The rival Oliver Company, bought out Cletrac in the mid-1940s and Oliver brand

machines were manufactured up until 1965. HCEA Canada is fortunate to have an Oliver OC-3 in our antique equipment roster. It was part of the late Charles Matthews collection. HCEA Canada wishes the staff and readership of Equipment Journal a great Christmas season with a happy, prosperous and healthy new year ahead. Stay safe! Please see updates on our web site: www.hceacanada.org The Historical Construction Equipment Association (HCEA Canada) 2023 events: 'Wheels & Tracks in Motion', held in June and the 'Last Blast' in October. Both events are held at the Simcoe County Museum To see more than 60 restored pieces of vintage construction equipment in action be sure to attend. HCEA Canada is a proud Heritage Partner of the Simcoe County Museum. 

PINERIDGE Lisco Edwards **1.866.488.0878**

AN INDUSTRY
DEMOLITION
SPECIALIST
WITH OVER
40
YEARS OF
EXPERIENCE



SHEARS, HAMMERS, PULVERIZERS AND GRAPPLES



HEAVY EQUIPMENT SALES, RENTALS AND REPAIRS

pineridgeliscoedwards.ca 



WE WISH YOU A

Happy Holiday

& JOYFUL NEW YEAR

Equipment Journal would like to thank our customers, readers and suppliers for their support throughout 2022.

***“CONEXPO-CON/AGG SHOWS US THE
FUTURE OF OUR INDUSTRY, WITH
INNOVATION, EQUIPMENT AND IDEAS
YOU CAN’T FIND ANYWHERE ELSE.”***

— GRANITEROCK, AROMAS, CA

***TAKING CONSTRUCTION
TO THE NEXT LEVEL.***



MARCH 14-18 / 2023 / LAS VEGAS / NEVADA

- › 2.7M Square Feet of Exhibits**
- › 130,000 Attendees**
- › 1,800 Exhibitors**
- › 150 Education Sessions**

REGISTER at conexpoconagg.com
Save 20% with promo code SHOW20





EQUIPMENT JOURNAL



SUBSCRIPTION FORM

Name:			
Company Name:			
Type of Business:			
Mailing Address:			
City/Town:			Province/State:
Postal Code/Zip:	Telephone:	Cell:	
*Email:			

**By entering your email address, you agree to receive email correspondence from Equipment Journal (Pace Publishing Limited). You understand that you can withdraw your consent at any time.*

Please rush my subscription today! I enclose payment for:

☐ **1 Year \$44.00 (Includes applicable taxes)**

☐ **2 Years \$72.00 (Includes applicable taxes)**

☐ **U.S.A. 1 Year \$80.00 (USD)**

Approved methods of payment

VISA

AMERICAN EXPRESS

mastercard

**CHEQUE
ENCLOSED**

Equipment Journal H.S.T. #104003 7957 RT

Account Number:	Expiry Date:
Today's Date:	Signature:

MAIL ORDER TO:

5160 Explorer Drive, Unit #6, Mississauga, ON L4W 4T7

or email: office@equipmentjournal.com

EJSUBFORM2022

ON THE MOVE

NEW HIRES & APPOINTMENTS IN THE HEAVY EQUIPMENT INDUSTRY

Epiroc appoints Paul Bergström President Digital Solutions division

Epiroc has appointed Paul Bergström President of the Digital Solutions division and member of Group Management, effective not later than June 1, 2023.

Epiroc has also announced a change in Group Management effective January 1, 2023.

Paul Bergström has been executive vice president of global services at Elekta, a Sweden-based medical

equipment company, since 2017.

Previously, he has held several management positions at Ericsson, a Sweden-based telecommunications company.

He is a Swedish citizen, born 1974, and holds a Master of Science in Electrical Engineering from the Royal Institute of Technology, Sweden.

Ashleigh Braddock will

continue as Acting Division President until Paul Bergström joins Epiroc, after which she will return to her role as vice president of sales and operations.

"I am pleased to welcome Paul to Epiroc," says Helena Hedblom, Epiroc's president and CEO. "We are expanding our digital offering organically and through acquisitions and Paul has the right background and

experience to successfully lead and grow our Digital Solutions division."

Effective January 1, 2023, Mattias Olsson, senior vice president of corporate communications, will take up a new role as vice president M&A and integration in the Group and will not be a member of Group Management.

Mattias' areas of responsibility will be assumed by

Håkan Folin, chief financial officer, and Nadim Penser, senior vice president people & leadership.

"Mattias has been instrumental in the successful creation of Epiroc," says Helena Hedblom. "He has contributed significantly to building Epiroc's brand, communication, sustainability, and investor relations, and I wish him success in his new role." ■



Paul Bergström

Terry Sturgell promoted to senior director of business development

Exodus Global has announced that Terry Sturgell has been promoted to Senior Director-Business Development for Exodus Global and its companies—ShearCore, BladeCore, OilQuick Americas and Connect Work Tools.

Most recently, Terry has been the Director of Global Accounts for ShearCore and has played a key role in the growth of the Fortress shears throughout North America and Europe.

In his new role, Terry will be responsible for promoting all Exodus Global products to key customers on a worldwide basis. Terry will be tasked with expanding our distribution and customer base, while also introducing our existing customer base to additional products from Exodus Global.

"My family and I feel blessed to be part of the Exodus Global family," states Terry, "It is a real honor to

be given the opportunity to work with the world class teams at Exodus Global. ShearCore, BladeCore, OilQuick Americas and Connect Work Tools are all top-of-the-line tools and wear parts, designed by industry leading engineers and backed by the best service team in the industry. I couldn't be more excited about my future with this great company and all that we bring to the industries that we work with." ■



Terry Sturgell

Barrett Rahn promoted to director of sales and marketing North America

CZM Foundation Equipment has announced the promotion of Barrett Rahn to director of sales and marketing North America. Previously, Rahn served as the factory sales manager.

Rahn joined CZM in 2012 as a sales representative and has been an integral part of CZM's North American expansion.

In this new role, he will oversee all aspects of sales, rentals, and marketing in the United States and Canada.

Also, he will lead the CZM

sales team and continue to work with various rental houses, including Driller's Choice, RPI, and PACO.

"Working for CZM over the last ten years and being a part of our growth has been a real pleasure. I'm looking forward to this new chapter with the company," said Rahn. "I'm excited for this upcoming year, with the expansion of our North American Headquarters and the new models we will be introducing to the market." ■



Barrett Rahn

Volvo Trucks North America names Jared Ruiz Named regional vice president

Jared Ruiz has been appointed Regional Vice President – West for Volvo Trucks North America.

In this new role, Ruiz will direct Volvo Trucks' western regional sales team in developing and implementing plans and strategies to achieve the company's commercial and customer satisfaction goals.

Ruiz joined Volvo Trucks in 2019 as District Sales Manager West Region. He currently serves as electromobility sales manager in the West region and functions as acting head of electromobility for

all of Volvo Trucks North America.

Ruiz has been instrumental in establishing and expanding the Volvo Trucks' electromobility sales and support ecosystem throughout the West coast, including working with numerous Volvo Trucks Certified Electric Vehicle Dealerships to complete the company's robust training program.

In his new role, Ruiz will become a part of the organization's management team, reporting directly to Peter Voorhoeve, president of Volvo Trucks North America. ■



Jared Ruiz

Stacey Babson Kaplan named senior VP, chief sustainability and compliance officer

Terex Corporation has announced that Stacey Babson Kaplan has been promoted to senior vice president, chief sustainability and compliance officer of Terex Corporation, effective immediately.

With this expansion of duties, she will add Sustainability to her longstanding role heading Ethics & Compliance for the company. She serves on the Terex Executive Leadership Team and the Environmental, Social and Governance Executive Steering Committee, reporting to John L. Garrison Jr, chairman, president and chief executive officer.

"Stacey's new assignment acknowledges her significant and growing role in overseeing Terex's initiatives in ESG," Mr. Garrison said. "Terex has long been highly active in ESG activities, and Stacey is helping us take this commitment to



Stacey Babson Kaplan

an even higher level."

Ms. Babson Kaplan joined Terex in 2002 as corporate counsel for Human Resources Compliance.

In 2005, she was appointed vice president, Deputy General Counsel, Employment & Global Diversity. She was named vice president, Chief Ethics & Compliance Officer in 2008.

She holds a Juris Doctor degree, cum laude, from Benjamin N. Cardozo School of Law and a Bachelor of Science degree from The Ohio State University. ■

Kohler names Samie Barr chief brand officer

Kohler has announced the appointment of Samie Barr as chief brand officer.

Barr will serve on the Kohler Leadership team and partner with leaders across the business to deliver the company's mission.

"Samie is an inspirational, high-performing leader who will help us continue to further enhance the creativity and impact of the KOHLER brand," said David Kohler. "She is a values-based leader known for building high-performing teams with an inspiring and inclusive style. Samie brings a deep understanding of global markets and has extensive experience in brand



Samie Barr

and business strategy, transformational innovation, digital leadership, and creative development for some of the world's most loved and trusted brands."

"It's an honour to join the iconic KOHLER brand with such an incredible foundation of bold innovation, impeccable design and an unwavering commitment to sustainability," said Barr. ■

Reliable
one-stop-shop
for technology
support and
service



**TECHNOLOGY FLEXIBILITY
FOR YOUR FLEET**

CONTACT YOUR LOCAL BRANCH TODAY

HAPPY HOLIDAYS

2018 VOLVO A45G
1 OF 3 AVAILABLE, 3600-4300 HOURS. HEATED BODIES, TAILGATES, WARRANTY REMAINING
\$569,000 EA

REINING IN GREAT DEALS SINCE 1946

We would like to sincerely thank our customers and suppliers for another successful year. We wish you a happy holiday and a safe, prosperous and healthy 2023!



2012 D3K2 LGP 2,080 HOURS, 6 WAY BLADE, AC CAB.
\$129,000



2017 CAT D6T LGP 6,015 HOURS, VPAT, AC CAB, M/S RIPPER, COMPLETE NEW U/C.....
\$395,000



2021 CAT CS78B 650 HOURS, 84" SMOOTH DRUM, CAB, AC.
FOR RENT OR SALE



2020 JOHN DEERE 245G LC 1,075 HOURS, 9'6" STICK, Q/C, HYD. THUMB.....
FOR RENT



2017 CAT 315FL 2,680 HOURS, BLADE, Q/C, 15'3" BOOM, 9'10" STICK, AUX. HYD, ZERO TAIL.....
FOR RENT



2020 KOMATSU PC360LC-11 1,110 HOURS, 10'5" STICK, Q/C, AUX. HYD., THUMB.....
FOR RENT



(2) 2022 CAT 349 NEXT GEN, 12'10" STICK, Q/C, TOOL CONTROL.....
FOR RENT



30 TON TRUCKS TAILGATES, HEATED BODIES, CHOICE OF TIRES.....
FOR RENT



2020 HITACHI ZX225 USLC-6 2,364 HOURS, 9'6" STICK, Q/C, AUX. HYD.....
\$219,000



2018 CAT 963K 3,760 HOURS, 4 IN 1 BUCKET, CAB.
FOR RENT OR SALE



2019 HITACHI ZX225 USLC-6 3,070 HOURS, 9'6" STICK, Q/C, AUX. HYD.....
\$199,000



2015 CAT 314ELCR 3,649 HOURS, BLADE, AUX. HYD. 9'10" STICK, 28" PADS.....
CALL

HUB EQUIPMENT

CONNECT WITH US!

| SALES

EVAN TZARAS
etzaras@hubequipment.com
📞 (416) 720-6280

| RENTALS

DARYL MACLENNAN
rentals@hubequipment.com
📞 (416) 930-6757

MARK SHANNON
mshannon@hubequipment.com
📞 (416) 720-5570